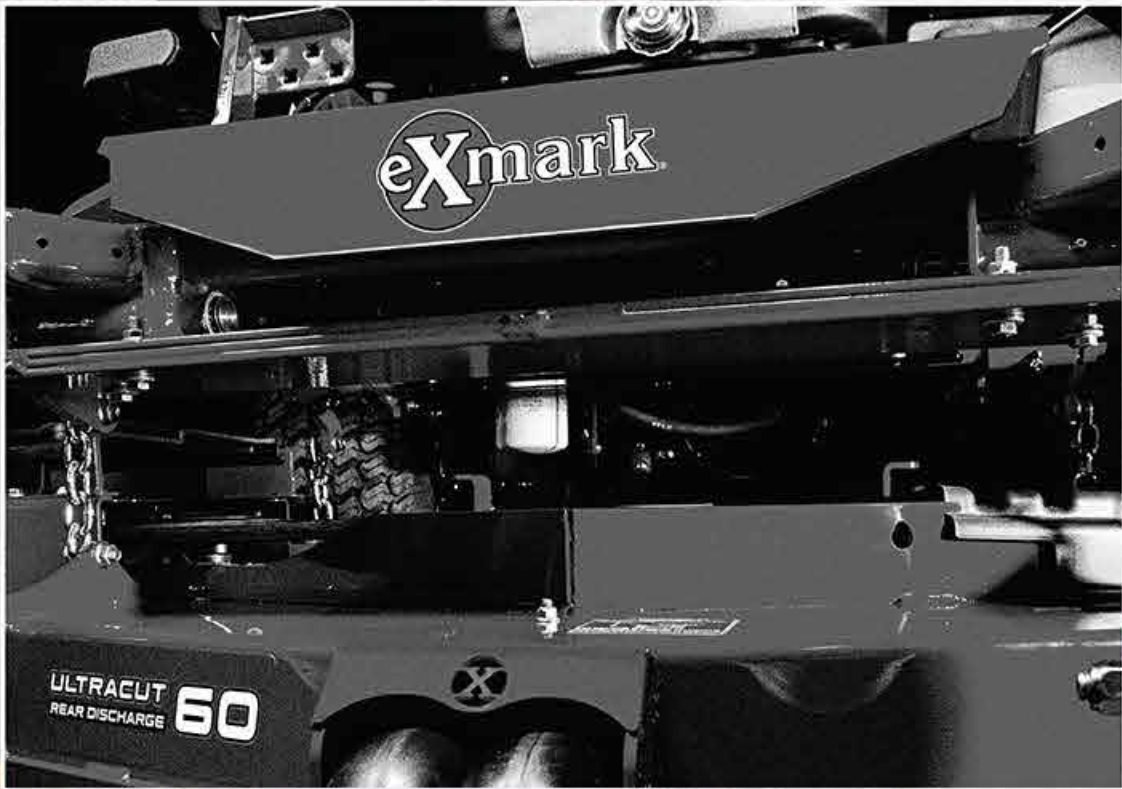


eXmark



2016

BUILT FOR THE BEST TRUSTED BY THE REST



COMMITTED TO CONSTANT IMPROVEMENT

At Exmark, we are always focused on the changing landscape of turf care. We're committed to making the products and features you need today, and anticipating the ones you'll need tomorrow. Our technology is always being refined, and our products are always being improved—often in revolutionary new ways.

Here are just some of the things we're doing to enhance your ownership experience:

ADVANCED SCIENCE MEANS MORE COMFORT

No other turf care manufacturer has worked harder to become an expert in the science of operator comfort. Today's Exmark products are far more comfortable to use, translating into more profitability for landscape professionals and a more pleasurable mowing experience for homeowners. Cut after cut. Year after year. Ensuring that you have the energy and time to engage in your passions when the work is complete.

EXCITING TECHNOLOGY MEANS MORE PERFORMANCE

Today more than ever, Exmark leads the industry with exciting innovations designed to increase engine life and boost overall productivity. Our advanced RED Onboard Intelligence Platform powers unprecedented communication among key systems on our mowers. The result is better reliability. Increased durability. And, better efficiency.

IMPROVED FUEL EFFICIENCY MEANS MORE ENVIRONMENTAL FRIENDLINESS

Everybody wants to reduce fuel costs. But, the trick is to do it without reducing mower performance. Exmark is succeeding, thanks to advancements like our ultra-efficient EFI engines which are designed to boost fuel economy significantly, compared to conventional carbureted engines. Landscapers and homeowners who use Lazer Z® X-Series mowers with our exclusive RED Technology find they get better fuel-efficiency, too. Better still, these mowers are available in environmentally friendly propane options.

CUTTING-EDGE INNOVATION MEANS MORE NEW PRODUCTS

Today, Exmark is offering a wider range of turf care products than ever before, from mowers and spreader-sprayers to aerators, brooms and more. Every single one of them is tough enough and reliable enough to bear the Exmark name. Homeowners love the variety. And landscapers know, the more services they offer, the more money they make.

For over three decades, Exmark has built a reputation on manufacturing the world's most durable and precise turf care equipment money can buy—respected by landscape professionals and homeowners alike. Our customers don't just use Exmarks. They swear by them.

That's why top landscape pros purchase Exmarks two-to-one over the next best-selling brand. They've learned to rely on the best-performing, most reliable machines available to create unmatched results. Because, whether you're a pro or just someone with a big lawn, you want more free time to do the things you love to do when the workday's done.

RECENT INNOVATIONS.....	2-3
EXMARK PRODUCTIVITY.....	6-7
OUR CUTTING EDGE.....	8-9
WALK-BEHIND MOWERS.....	12-13
WIDE-AREA WALK-BEHIND MOWERS.....	14-17
STAND-ON MOWERS.....	20-21
RIDING MOWERS.....	24-29
LAZER Z® STORIES AND MOWERS.....	32-41
NAVIGATOR®.....	42-43
OEM PARTS, ACCESSORIES AND OPTIONS.....	46-53
ULTRAVAC™ COLLECTION SYSTEM.....	54-57
TURF MANAGEMENT.....	54-57
UTVS.....	58-59
PRODUCT SPECIFICATIONS.....	60-71
WARRANTY.....	72



LOOK WHAT WE'VE BEEN UP TO LATELY.

YOU ASKED. WE ANSWERED. WITH THE TOUGHEST, MOST ADVANCED MOWERS ON THE MARKET.



PATENTED RED TECHNOLOGY

Our advanced Onboard Intelligence Platform optimizes machine life, maximizes productivity, and dramatically increases fuel efficiency.

Learn more about the RED Technology on page 35.



EXMARK® ENGINE

At Exmark, we make our own engines. That means we control the quality, and nobody's standards are higher than ours. The bottom line: you can be absolutely sure you're getting both our signature, custom-engineered features, and an engine that's perfectly matched to the machine you're buying—for the best possible performance.

Learn more about the Exmark Engine on page 6.



PROPANE VANTAGE®

Our best-in-class propane-fueled mowers have proven to be so popular, we've expanded our lineup. Case in point: our Vantage S-Series is now available with propane technology and a 52" or 60" UltraCut Series 4 full-floating deck.

Learn more about the Propane Vantage on page 21.



REAR DISCHARGE DECK

The Lazer Z® E and X-Series, DS-Series and Pioneer are now available with rear-discharge cutting systems. That means better clipping control, reduced horsepower requirements and, most of all, superior cut quality.

Learn more about the Rear Discharge Deck on page 9.



QUEST® FRONT STEER

The Quest™ Front Steer blends the comfort and ease of steering-wheel operation and the superior productivity of a zero-turn rider. The result is a premium residential mower that delivers commercial-grade features, comfort—and value.

Learn more about the Quest Front Steer on page 26.



SPREADER-SPRAYER

Exmark's innovative spreader-sprayer features our most advanced lean-to-steer technology. You'll also benefit from excellent hillside stability, easy-to-learn controls, and complete support from the most extensive dealer network in the business.

Learn more about the Spreader-Sprayer on page 55.

SUSPENSION PLATFORM

Exmark's 2016 Lazer Zs are even more revolutionary, thanks to our new Suspension Platform, precisely developed to maximize operator comfort and reduce fatigue. A seat, super-dampening ISO mounts, adjustable front and rear shocks, and unwavering trailing arms converge to provide a full 3 1/2 inches of vertical travel—and the smoothest-riding zero turn available in the market today.

Learn more about the Suspension Platform on page 36.



www.exmark.com

A black and white photograph of a person lying in a hammock, suspended between two trees in a forest. The person is wearing a light-colored shirt and dark pants, and is looking towards the camera. The background is filled with the soft, out-of-focus light filtering through the trees, creating a bokeh effect. The hammock is made of a dark, woven material with a wooden spreader bar.

IT'S ABOUT TIME.

We understand that your idea of weekend enjoyment is as unique as you are. Whether on the water or in the woods, watching or playing sports, spending time with family and friends, or just kicking back and doing nothing at all, the leisure choices we all make usually revolve around time. That's why we work Mondays through Fridays to produce not only the best-cutting, most durable, reliable mowers money can buy, but mowers that will also get you off the lawn—and onto life's most special moments—in record time.



GETTING MORE OUT OF YOUR MOWER HELPS YOU GET MORE OUT OF YOUR WEEKENDS.

IT ALL STARTS WITH OUR FAMOUSLY RELIABLE ENGINES

In a lot of ways, a mower is only as good as its engine. That's why we put so much effort into matching the right engine with the right mower in our quest to provide the most optimized performance possible. On select models, we even developed our own engines—built precisely to our specifications. Doing so allows us to control the quality from start to finish. Among our most recent innovations are a quick-and-easy oil drain system, and an advanced air intake system specially designed to decrease dirt ingestion and increase performance. After the sale, of course, we'll still be right there to support you—with industry-leading parts, service, technical support and a powerful 3-year warranty.



THE COST OF OWNERSHIP

IN THE LONG RUN, OWNING AN EXMARK MAY TURN OUT TO BE ONE OF THE WISEST INVESTMENTS YOU'LL EVER MAKE.

As you consider an Exmark, it's important to remember that the investment you make in a new mower isn't based on purchase price alone. In the long run, Exmark's legendary durability, high performance and low maintenance will save you both time and money. Factoring in lower downtime, reduced repair bills and higher resale value, owning an Exmark becomes a wise investment for landscape pros and homeowner, alike. And, it will free up money for things like golf clubs, fishing gear, boating equipment, and other items that lead to further enjoyment of the activities you live to pursue in your spare time.

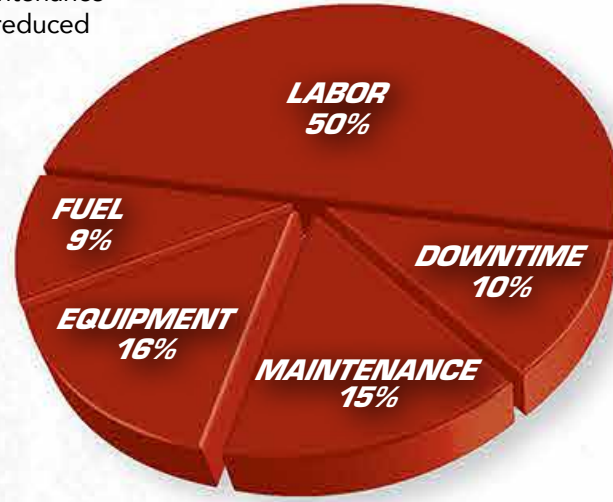
Exmark equipment can also help build your business in less tangible ways, like helping retain your best customers, while letting you concentrate on customer service and sales instead of mower repair bills.

Here are other major reasons why Exmark is the leading mower brand among landscape professionals:

BUILD YOUR BOTTOM LINE

An Exmark mower can increase your profits through:

- Increased employee productivity
- Reduced downtime losses
- Lowered repair costs
- Ease of maintenance
- Higher resale value



Downtime, maintenance, and labor account for 75% of mowing costs for landscape professionals.

ACRES AND ACRES OF PRODUCTIVITY

EXMARK MOWERS ACRES-PER-HOUR PRODUCTIVITY (Efficiency at 100% and 80%)*

MPH	21" Width		30" Width		34" Width		36" Width		42" Width		48" Width		50" Width		52" Width		60" Width		72" Width	
	100%	80%	100%	80%	100%	80%	100%	80%	100%	80%	100%	80%	100%	80%	100%	80%	100%	80%	100%	80%
1.5	0.32	0.25	0.45	0.36	0.52	0.41	0.55	0.44	0.64	0.51	0.73	0.58	0.76	0.60	0.79	0.63	0.91	0.73	1.09	0.87
2.0	0.42	0.34	0.61	0.48	0.69	0.55	0.73	0.58	0.85	0.68	0.97	0.77	1.01	0.81	1.05	0.84	1.21	0.97	1.45	1.16
2.5	0.53	0.42	0.76	0.60	0.86	0.69	0.91	0.73	1.06	0.85	1.21	0.97	1.26	1.01	1.31	1.05	1.52	1.21	1.82	1.45
3.0	0.64	0.51	0.91	0.73	1.03	0.82	1.09	0.87	1.27	1.02	1.45	1.16	1.52	1.21	1.58	1.26	1.82	1.45	2.18	1.74
3.5	0.74	0.59	1.06	0.85	1.20	0.96	1.27	1.02	1.48	1.19	1.70	1.35	1.77	1.41	1.84	1.47	2.12	1.69	2.55	2.03
4.0	0.85	0.68	1.21	0.97	1.37	1.10	1.45	1.16	1.70	1.35	1.94	1.55	2.02	1.61	2.10	1.68	2.42	1.94	2.91	2.32
4.5					1.55	1.23	1.64	1.31	1.91	1.52	2.18	1.74	2.27	1.81	2.36	1.89	2.73	2.18	3.27	2.61
5.0					1.72	1.37	1.82	1.45	2.12	1.69	2.42	1.94	2.53	2.02	2.63	2.10	3.03	2.42	3.64	2.90
5.5					1.89	1.51	2.00	1.60	2.33	1.86	2.67	2.13	2.78	2.22	2.89	2.31	3.33	2.66	4.00	3.19
6.0					2.06	1.65	2.18	1.74	2.55	2.03	2.91	2.32	3.03	2.42	3.15	2.52	3.64	2.90	4.36	3.48
6.5					2.23	1.78	2.36	1.89	2.76	2.20	3.15	2.52	3.28	2.62	3.41	2.73	3.94	3.15	4.73	3.77
7.0					2.40	1.92	2.55	2.03	2.97	2.37	3.39	2.71	3.54	2.82	3.68	2.94	4.24	3.39	5.09	4.06
7.5							2.73	2.18			3.64	2.90			3.94	3.15	4.55	3.63	5.45	4.35
8.0							2.91	2.32			3.88	3.10			4.20	3.35	4.85	3.87	5.82	4.65
8.5											4.12	3.29			4.46	3.56	5.15	4.11	6.18	4.94
9.0											4.36	3.48			4.73	3.77	5.45	4.35	6.55	5.23
9.5											4.61	3.68			4.99	3.98	5.76	4.60	6.91	5.52
10.0											4.85	3.87			5.25	4.19	6.06	4.84	7.27	5.81
11.0																	6.67	5.32	8.00	6.39
12.0																	7.27	5.81	8.73	6.97

*Two productivity ratings are shown: one at 100% and one at 80% efficiency. Many manufacturers use 100% efficiency ratings for sales purposes. Exmark believes an 80% efficiency rating is more representative of actual mowing conditions, as it allows for turns and overlapping.
Formulas for calculating acres per hour: 100% efficiency: MPH x width of cut ÷ 99 = acres per hour | 80% efficiency: MPH x width of cut ÷ 124 = acres per hour

IT'S ALL ABOUT CUT QUALITY.

At the end of the day, the true test for any mower is the quality of cut it delivers. Landscape professionals depend on it. Homeowners thrive on it. And, our reputation rides on it. That's why we're constantly improving our cutting decks with the goal of perfection in mind.

MAKING THE CUT



OUR LATEST DECKS ARE A CUT ABOVE THE REST.



BETTER-ENGINEERED BLADE SPINDLES

Exmark blade spindles are engineered with a sealed, maintenance-free bearing, manufactured to withstand severe blade impacts. Our design also features a splined blade driver created to eliminate blade bolt tightening, making blade removal simpler.



TAKING A CLOSER LOOK AT CASTERS

In our constant efforts to deliver better results, the engineers at Exmark consider everything—even something as simple as caster position. By moving our casters from the traditional location, we significantly improved cut quality, helping the blade lift bent grass and cut it cleanly, reducing stragglers and wheel tracks.



SINGLE-POINT HEIGHT ADJUST

Our single-point height adjust gives you the ability to fine-tune deck height settings without resetting rake and level. The result: a more uniform, more professional-looking cut. Quite frankly, there's no better way to ensure consistent cutting height on all your mowers.



RACETRACK PERFORMANCE

Our Panhard Rod System comes straight out of the world of auto racing, so you know it's designed for performance. The rod is mounted diagonally under the mower's frame, taking lateral force off the deck struts. This positioning virtually eliminates deck sway—and the wear it creates—and dramatically reduces maintenance, even after extended use.



THE CHOICES YOU WANT

Our transport lock function enables operators to manually lock the deck in the "up" position. When mowing uneven terrain, this provides the power to avoid scalping by continuously feathering the machine over the terrain.

These are not standard features, and not all of these features are available on all decks.

SERIES 1

- 4.0" deck depth.
- No-maintenance, sealed and non-greasable spindles.
- Standard on Quest™ E-Series model.

SERIES 2

- 4.0" deck depth standard on Quest™ S-Series, and Pioneer E-Series.
- 5.0" deck depth standard on Metro® 32" and 36", and Viking™ 36" models.
- No-maintenance, sealed and non-greasable spindles.

ULTRACUT™ SERIES 3

- 5.0" deck depth.
- Flow-control baffles.
- No-maintenance, sealed and non-greasable spindles.
- Coned anti-scalp rollers.
- Standard on Metro® 48", Viking™ 48", all Turf Tracer® S-Series, Vantage® 36", and Pioneer S-Series 48" and 52" models.

ULTRACUT™ SERIES 4

- 5.5" deck depth.
- Three large, formed-and-welded, 7-gauge steel reinforcement rings on top of deck provide superior strength and durability. (Excludes Lazer Z® E-Series 48" and 52" models.)
- Flow-control baffles.
- No-maintenance, sealed and non-greasable spindles.
- Patented spherical bearing design on idler arm pivots requires only annual greasing.
- Coned anti-scalp rollers.
- Standard on Turf Tracer® X-Series, Vantage® 48", 52" & 60", Pioneer S-Series 60", Lazer Z® E-Series and Lazer Z® S-Series models.

SERIES 5

- 6.0" deck depth.
- Three large, formed-and-welded, 7-gauge steel reinforcement rings on top of deck provide superior strength and durability.
- Flow-control baffles.
- No-maintenance, sealed and non-greasable spindles.
- Patented spherical bearing design on idler arm pivots requires only annual greasing.
- Coned anti-scalp rollers.
- Standard on Lazer Z DS-Series model.

ULTRACUT™ SERIES 6

- 5.5" deck depth.
- Three large, formed-and-welded, 7-gauge steel reinforcement rings on top of deck provide superior strength and durability.
- Flow-control baffles.
- No-maintenance, sealed and non-greasable spindles.
- Patented spherical bearing design on idler arm pivots requires only annual greasing.
- Coned anti-scalp rollers.
- Standard on Lazer Z® X-Series 60" and 72" models.

ULTRACUT™ REAR DISCHARGE

- 5.5" deck depth.
- Welded 7-gauge, high-strength alloy steel deck shell provides superior strength and durability.
- No-maintenance, sealed and non-greasable spindles.
- Counter-rotating blade provides even clipping dispersion.
- Durable through-axle anti-scalp rollers.
- Compression molded, ultra-high molecular weight side bumper protects deck and follows ground contours.
- Available on select Pioneer S-Series models, Lazer Z® E-Series, Lazer Z® X-Series, and Lazer Z® DS-Series.



MANUFACTURED WITH A PURPOSE.

You don't just roll out of bed one day to discover you're making the world's best commercial-grade mowers and turf care equipment. It takes years of hard work and dedication. That's why we're dedicated to creating machines designed to make your life easier. And, your weekends more rewarding. Because, when you work faster, you'll have more free time to do the things you really love.

IN A CLASS ALL THEIR OWN

Exmark's commercial-grade walk-behind mowers are in a class all their own. They're renowned for getting the job done faster, and better, thanks to unmatched cut quality and a track record for durability. Some of our most recent innovations include a patented front-height adjustment system and 3-in-1 cutting system that offers even more versatility and a better, more impressive cut than ever before.



COMPARISON CHART

	COMMERCIAL 21 S-SERIES	COMMERCIAL 21 X-SERIES	COMMERCIAL 30
ENGINES	Kawasaki® FJ180V <i>(Pressure Lube)</i>	Honda® GXV160 Kawasaki® FJ180 KAI <i>(KAI is Pressure Lube, Oil Filter, Air Filter)</i>	Kawasaki® FJ180 KAI <i>(KAI is Pressure Lube, Oil Filter, Air Filter)</i>
DECK SIZE	21"	21"	30"
DECK STYLE	2-in-1: Bag and Mulch Single Blade	2-in-1: Bag and Mulch Single Blade	3-in-1: Bag, Mulch & Side Discharge Twin Blade
HEIGHT OF CUT	1"– 4.5" <i>Single-Point Rear Height Adjust Patented Front-Height Adjust System</i>	1"– 4.5" <i>Single-Point Rear Height Adjust Patented Front-Height Adjust System</i>	1.5"– 5" <i>Single-Point Rear Height Adjust Patented Front-Height Adjust System</i>
FUEL CAPACITY	2 Quarts	1 Gallon	1 Gallon
EQUIPMENT	Optional Engine Guard, Front Bumper, Deck Wear Kit, Mulch Plug and Coated Bails	Standard Engine Guard, Front Bumper, Deck Wear Kit, Mulch Plug and Coated Bails	Standard Engine Guard, Front Bumper, Deck Wear Kit, Mulch Plug and Coated Bails
BLADE ENGAGEMENT	Zone Start	Zone Start and BBC	BBC
WHEEL SIZE	FRONT: 9"x2.5" Semi-Pneumatic REAR: 9"x2.5" Semi-Pneumatic	FRONT: 9"x2.5" Semi-Pneumatic REAR: 9"x2.5" Semi-Pneumatic	Front: 9"x2.5" Semi-Pneumatic Rear: 10"x3" Semi-Pneumatic
BAG SIZE	2.5 Bushels	2.5 Bushels	2.5 Bushels



COMMERCIAL 21 S-SERIES FEATURES

RE-DESIGNED REAR DOOR

Re-Designed to improve seal and durability with reduced blowout. (Available on the Commercial 21 S and X Series)



PATENTED FRONT-HEIGHT ADJUST

Simple. Innovative. Built to last. The S-Series' patented front-height adjustment eliminates the need for pivot-style adjusters.



AVAILABLE ACCESSORIES

- Mulch Plug
- 9.5"-Diameter Wheels
- Optional Blades
- Deck Bumper
- Coated Bails
- Wheel Weight Kit
- Deck Wear Kit
- Engine Guard
- 1-Gallon Gas Tank

COMMERCIAL 21 X-SERIES FEATURES

PATENTED FRONT-HEIGHT ADJUST

Simple, innovative and built to last, the X-Series' patented front-height adjustment eliminates the need for pivot-style adjusters.



THE EXMARK SIGNATURE CUT

The X-Series cutting deck is a full 5 inches deep, delivering a consistently impressive cut—whether you're mulching or bagging.



AVAILABLE ACCESSORIES

- Wheel Weight Kit
- 9.5"-Diameter Wheels
- Optional Blades

COMMERCIAL 30 FEATURES

TWIN-BLADE EFFICIENCY

The Commercial 30's innovative timed-blade system helps keep the overall design compact while still delivering a superior cut. It also reduces horsepower requirement.



SIMPLIFIED MAINTENANCE

The Commercial 30's access panel allows you to make easy belt and blade adjustments. The simplified maintenance means less time in the shop. Which means you'll be off the lawn and onto your passions quicker than ever before.



PATENTED FRONT-HEIGHT ADJUST

Simple, innovative and built to last, the Commercial 30's patented front-height adjustment eliminates the need for pivot-style adjusters.



AVAILABLE ACCESSORIES

- Optional Blades
- High Performance Mulch Kit

EQUIPPED WITH EVERYTHING

At Exmark, we pack more technology, more performance, and more value into every one of our commercial-grade walk-behind mowers. So, whether you choose a Metro® or Viking™ Series mower, you can rest assured it's equipped with everything you need to get the job done. And, get it done right. The first time. Giving you more free time.



METRO® FEATURES

SIMPLE DRIVE BELT MAINTENANCE
Drive belts can be changed quickly and easily, with no tools required. Deck belts can also be easily adjusted.



ENHANCED CONTROL SYSTEM
To help reduce fatigue, our patented ECS puts the operator's hands in a natural, neutral position. If preferred, traditional pistol-grip controls are available on the 32" model.



ALL-AROUND PERFORMANCE
The Metro® delivers excellent performance, working at speeds up to 6.2 mph and providing reverse assist. High-clearance, well-balanced decks make curb climbing and trailering easy tasks.



AVAILABLE ACCESSORIES

- Micro-Mulch™ System
- Three-Bushel Bagger
- Walk-Behind Weight Kit
- Operator-Controlled Discharge Chute

COMPARISON CHART

	METRO®	VIKING™
ENGINES	Kawasaki® FS481V V-Twin	Kawasaki® FS481V V-Twin
DECK SIZE	32"/36"/48"	36"/48"
DECK STYLE	5" Deep Fixed-Deck UltraCut™ Series 2 (32"/36") <small>5.40" Cutter Housing, 1" Spindle Tube</small> 5" Deep, Fixed-Deck UltraCut™ Series 3 (48") <small>5.40" Cutter Housing, 1" Spindle Tube</small>	5" Deep, Fixed-Deck UltraCut™ Series 2 (36") <small>5.40" Cutter Housing, 1" Spindle Tube</small> 5" Deep, Fixed-Deck UltraCut™ Series 3 (48") <small>5.40" Cutter Housing, 1" Spindle Tube</small>
CONTROLS	Pistol (32") ECS (36"/48")	ECS
TRANSMISSION	Belt-Drive	Hydro-Drive
SPEED	Up to 6.2 mph	Up to 6.2 mph
STARTER	Recoil	Recoil
PTO	Mechanical	Mechanical
FRONT CASTER	9"x3.5-4" Semi-Pneumatic	9"x3.5-4" Semi-Pneumatic
DRIVE TIRES	13"x5.0-6" (32") 13"x6.5-6" (36"/48")	16"x6.5-8" (36"/48")

VIKING



VIKING™ FEATURES

DECK OPTIONS
Choose either a 36-inch UltraCut™ Series 2 or 48-inch UltraCut™ Series 3 cutting deck.



OPERATOR-FRIENDLY
The hydro-drive Viking™ is easy to operate, with instant forward-to-reverse and infinite speed control. Works at speeds up to 6.2 mph and 2.2 mph in reverse.



EXCEPTIONAL TRACTION
Large, 16x6.5-8 tires provide extra grip while smooth-tread, semi-pneumatic front caster tires eliminate flats.



AVAILABLE ACCESSORIES

- Micro-Mulch™ System
- Three-Bushel Bagger
- Walk-Behind Weight Kit
- Exmark StandOn
- Operator-Controlled Discharge Chute

ENGINEERED FOR THE LONG RUN

Exmark wide-area walk-behind mowers are engineered for speed, efficiency, and durability for the long run. From the fixed-deck, gear-drive Metro® to the industry leading Turf Tracer® X-Series, Exmark walk-behinds deliver a quality of cut that no one else can match.



TURF TRACER® S-SERIES FEATURES

NEW ELECTRIC CLUTCH
Exmark's advanced electric clutch technology means easier and faster belt servicing. It's now proven to be among the most durable and reliable in the business, too.



SAY GOODBYE TO FLATS
Standard 9" x 3.5-4" smooth-tread, semi-pneumatic front caster tires virtually eliminate tire repair.



HOURLY METER COMES STANDARD
Use it to track maintenance records and service intervals for longer mower life.



AVAILABLE ACCESSORIES

- Micro-Mulch™ System
- Walk-Behind Weight Kit
- Turf Striper
- Three-Bushel Bagger
- Exmark StandOn
- Operator-Controlled Discharge Chute

COMPARISON CHART

TURF TRACER® S-SERIES

TURF TRACER® X-SERIES

ENGINES	Kawasaki® FS481V V-Twin Kawasaki® FS541V V-Twin Kawasaki® FS600V V-Twin Kohler® PCV680 Command™ EFI PROPANE	Kawasaki® FX691V V-Twin Kohler® ECV650 Command™ EFI Kohler® PCV680 Command™ EFI PROPANE
DECK SIZE	36"/48"/ 52"	52"/ 60"
DECK STYLE	5" Deep, Full-Floating UltraCut™ Series 3 7.75" Cutter Housing, 25mm Shaft	5.5" Deep, Full-Floating UltraCut™ Series 4 7.75" Cutter Housing, 25mm Shaft
CONTROLS	ECS	ECS
TRANSMISSION	Hydro-Drive	Hydro-Drive
SPEED	Up to 6.2 mph	Up to 6.75 mph
STARTER	Recoil or Electric (Depending on Engine)	Electric
PTO	Electric Clutch	Electric Clutch
FRONT CASTER	9"x3.5-4" Semi-Pneumatic	11"x4.0-5" Semi-Pneumatic
DRIVE TIRES	16"x6.5-8" (36") 16"x7.5-8" (48"/ 52")	18"x8.5-8" (52"/ 60")



TURF TRACER® X-SERIES FEATURES

PATENTED ENHANCED CONTROL SYSTEM (ECS)
Recent university tests confirmed what we've long known: landscape professionals prefer our control system to all others on the market.



SUPERIOR AIR FILTRATION
All X-Series Turf Tracers come with heavy-duty canister air filtration systems for longer engine life, more efficient performance and simpler maintenance.



CLUTCH PERFORMANCE
A large-capacity, electromagnetic PTO clutch provides outstanding durability for extra-long life.



AVAILABLE ACCESSORIES

- Micro-Mulch™ System
- Walk-Behind Weight Kit
- Turf Striper
- Three-Bushel Bagger
- Exmark StandOn
- Operator-Controlled Discharge Chute



**WHEN YOU HAVE
SOMETHING TO SAY,
WE TAKE NOTE.**

It's a pretty simple formula: at Exmark, our goal is to make machines you want to own. So, we absolutely listen when you have something to say. Listen closely, in fact. Then, we build the products you asked for. Frankly, it's a philosophy that's served us pretty darn well.

AN INNOVATION IN STAND-ONS

Coveted for its advanced design, superior maneuverability and legendary durability, the Exmark Vantage® has become the standard for operator-focused, stand-on mower performance. Its lengthy list of innovative features includes a weight-compensating, suspended operator platform and patented control systems.



COMPARISON CHART

	VANTAGE® S-SERIES	VANTAGE® X-SERIES
ENGINES	Kawasaki® FS541V V-Twin Kawasaki® FS691V V-Twin Kohler® ECV730 Command™ EFI Kohler® ECV740 Command™ EFI Kohler® PCV740 Command™ EFI PROPANE	Kawasaki® FS651V V-Twin Kohler® ECV730 Command™ EFI Kohler® ECV740 Command™ EFI
DECK SIZE	36"/48"/52"/60"	48"/52"/60"
DECK STYLE	5" Deep, Full-Floating UltraCut™ Series 3 (36") <i>7.75" Cutter Housing, 25mm Spindle Shaft with Splined Blade Driver</i> 5.5" Deep, Full-Floating UltraCut™ Series 4 (48"/52"/60") <i>7.75" Cutter Housing, 25mm Spindle Shaft with Splined Blade Driver</i>	5.5" Deep, Full-Floating UltraCut™ Series 4 <i>7.75" Cutter Housing, 25mm Spindle Shaft with Splined Blade Driver</i>
CONTROLS	Push-To-Go Twin Levers	ECS
TRANSMISSION	Pump (12cc)/Wheel Motor (230cc)	Pump (12cc)/Wheel Motor (230cc)
SPEED	Up to 8.0 mph	Up to 8.0 mph
STARTER	Electric	Electric
PTO	Electric Clutch	Electric Clutch
FRONT CASTER	11"x4.0-5" Semi-Pneumatic	11"x4.0-5" Semi-Pneumatic
DRIVE TIRES	18"x8.5-8" (36") 20"x10.5-8" (48"/52"/60")	20"x10.5-8" (48"/52"/60")



VANTAGE® S-SERIES FEATURES

PATENTED MECHANICAL CONTROL SYSTEM

Thanks to its solid rods, there are no cables to stretch and no annoying loss of ground speed.



ZERO-MAINTENANCE SPINDLES

Built from rugged cast aluminum with sealed bearings, our spindles are designed to withstand the long-term effects of moisture and impacts, with no annual greasing required.



NOW WITH PROPANE

The Vantage® S-Series is now available with propane technology and a 52" or 60" UltraCut™ Series 4 full-floating deck.



AVAILABLE ACCESSORIES

- Micro-Mulch™ System
- Hella® Work Lamp Kit
- Three-Bushel Bagger (Excludes Propane Units)
- Jack and Receiver
- Trash Container
- Operator-Controlled Discharge Chute



VANTAGE® X-SERIES FEATURES

"ENHANCED" ECS CONTROLS

Redesigned for improved smoothness and reduced drive lever tension for reduced operator fatigue and improved control.



OPERATOR PLATFORM

A sturdy platform with self-compensating suspension provides a comfortable ride for operators of all sizes. Patented, integrated thigh pads also pivot away, allowing easy access for maintenance, and fold up for reduced trailer space.



HYDRO-DRIVE

Our new 12cc pump and 230cc wheel motor provide smoother operation and consistent control.



AVAILABLE ACCESSORIES

- Micro-Mulch™ System
- Hella® Work Lamp Kit
- Three-Bushel Bagger
- Jack and Receiver
- Trash Container
- Operator-Controlled Discharge Chute



**RE-SHAPING.
RE-DESIGNING.
RE-IMAGINING.**

For over three decades, Exmark has blazed new trails with the industry's most innovative, most technologically advanced solutions. That's how we build better mowers. And, a better business.



RESIDENTIAL RIDERS

Doing the job right starts with using the right tools. So, if you want professional-grade cut quality and performance in a premium residential zero-turn rider, start with the Exmark® Quest™. It offers more commercial-grade features, more comfort and more value.



COMPARISON CHART

	QUEST™ E-SERIES	QUEST™ S-SERIES	QUEST™ S-SERIES FRONT STEER
ENGINES	Exmark 452cc Exmark 708cc V-Twin	Exmark 452cc Exmark 708cc V-Twin	Exmark 708cc V-Twin
DECK SIZE	42"/50"	34"/42"/50"	42"/50"
DECK STYLE	4" Deep, Full-Floating Series 1 Stamped (42") 5.50" Cutter Housing, 17mm Spindle Shaft 4" Deep, Full-Floating Series 2 Fabricated (42"/50") 5.50" Cutter Housing, 17mm Spindle Shaft	4" Deep, Full-Floating Series 2 Fabricated 5.50" Cutter Housing, 17mm Spindle Shaft	4" Deep, Full-Floating Series 2 Fabricated 5.50" Cutter Housing, 17mm Spindle Shaft
WARRANTY	90-Day Commercial, 3-Year Consumer, 3-Year Engine	90-Day Commercial, 3-Year Consumer, 3-year Engine	90-Day Commercial, 3-Year Consumer, 3-Year Engine
HYDRO DRIVE SYSTEM	ZT-2100 (42") ZT-2200 (50")	ZT-2200 (34"/42") ZT-2800 (50")	ZT-2200 (42") ZT-2800 (50")
SPEED	Up to 7.0 mph	Up to 7.0 mph	Up to 7.0 mph
FEATURES	2.9-Gallon Fuel Capacity, Optional Hour Meter, Integrated Parking Brake	2.9-Gallon Fuel Capacity, Standard Hour Meter, Seat Suspension System, Integrated Parking Brake	2.9-Gallon Fuel Capacity, Standard Hour Meter, Seat Suspension System, Integrated Parking Brake
FRONT CASTER	11"x4" Pneumatic (42") 13"x5" Pneumatic (50")	11"x4" Pneumatic (34"/42") 13"x5" Pneumatic (50")	11"x4" Pneumatic (42") 13"x5" Pneumatic (50")
DRIVE TIRES	18"x7.5-8" (42") 18"x9.5" (50")	18"x6-8" (34") 18"x7.5-8" (42") 20"x8-10" (50")	18"x7.5-8" (42") 20"x8-10" (50")



A CONTINUED QUEST FOR EXCELLENCE

It's not complicated. If you want professional-grade cut quality and performance in a residential mower, you've got to use what the pros use. Step up to Exmark® and our premium residential zero-turn riders. Exmark® Quest™ mowers give you more professional-grade features. More comfort. And, more value. For a perfectly mowed lawn in no time. Every time.

QUEST™ S-SERIES FRONT-STEER FEATURES

EASY TO OPERATE

The front-steer Quest™ blends the comfort of driving with a steering wheel and the superior productivity of a zero-turn rider.



SMART PARK

The park brake engages automatically whenever the operator leaves the seat, or when the key switch is shut off. The brake disengages by simply depressing the foot pedal.



KEY CHOICE

This innovative safety feature allows you to select whether or not to utilize the cutting deck in reverse. If the key is removed, reverse maneuverability will then be disengaged.



AVAILABLE ACCESSORIES

- Micro-Mulch™ System
- Equipment Cover
- Non-Powered Collection System (Six bushel)
- Turf Striper
- Jack and Receiver



QUEST™ E-SERIES FEATURES

AUTOMATIC BRAKING SYSTEM

At Exmark, safety is always a priority. Whenever the Quest's controls are positioned outward, its parking brake is applied automatically.



SIMPLE ADJUSTMENT

With a single-point height adjust, it's easy to vary the Quest's cutting deck.



NEW WELDED AND FABRICATED DECK

Our deck system offers added strength and commercial durability.



AVAILABLE ACCESSORIES

- Micro-Mulch™ System
- Equipment Cover
- Jack and Receiver
- Non-Powered Collection System (Six bushel)
- Turf Striper
- Hour Meter
- Ingress/Egress Assistance Handle

QUEST™ S-SERIES FEATURES

WELDED AND FABRICATED DECK

Our deck system offers added strength and commercial durability.



SUPERIOR HANDLING

The Quest™ has been designed with a low center of gravity that greatly improves handling and traction. This is accomplished by positioning its heaviest components low in the frame, toward the center of the machine.



COMFORT COMES STANDARD

The Quest's premium, ergonomically designed seat system provides a smooth, comfortable ride, even over uneven terrain.



AVAILABLE ACCESSORIES

- Micro-Mulch™ System
- Equipment Cover
- Non-Powered Collection System (Six bushel)
- Turf Striper
- Jack and Receiver
- Ingress/Egress Assistance Handle

UNBEATABLE VALUE

If you're looking for a commercial-grade, zero-turn mower that combines Exmark's renowned cut quality with unbeatable value, then you want the Exmark Pioneer. Touting commercial-grade Kawasaki and Kohler engines, heavy duty unibody frames, and patented UltraCut decks, Pioneers deliver more performance than any other comparably-priced mower. Period.



COMPARISON CHART

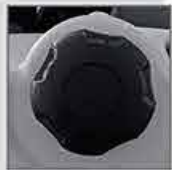
PIONEER E-SERIES		PIONEER S-SERIES
ENGINES	Kawasaki® FR651 V-Twin Kawasaki® FR691 V-Twin	Kohler® ZT710 Confidant™ Kohler® ZT720 Confidant™ Kohler® ZT740 Confidant™ Kawasaki® FX730V V-Twin
DECK SIZE	48"/52"	48"/52"/60"
DECK STYLE	4" Deep, Full-Floating Series 2 Fabricated <small>7.50" Cutter Housing, 17mm Spindle Shaft with Hex Blade Driver</small>	5" Deep, Full-Floating UltraCut™ Series 3 Fabricated (48"/52") <small>7.75" Cutter Housing, 25mm Spindle Shaft with Splined Blade Driver</small> 5.5" Deep, Full-Floating UltraCut™ Series 4 Fabricated (60") <small>7.75" Cutter Housing, 25mm Spindle Shaft with Splined Blade Driver</small> Full-Floating Rear-Discharge Deck (60") <small>7.75" Cutter Housing, 25mm Spindle Shaft with Splined Blade Driver</small>
WARRANTY	1-Year Commercial, 4-Year Consumer or 500 Hours, 3-Year Engine	2-Year Commercial, 4-Year Consumer or 500 Hours, 3-Year Engine
HYDRO DRIVE SYSTEM	ZT-2800	ZT-3100 (48"/52") ZT-3400 (60")
SPEED	Up to 7.0 mph	Up to 8.0 mph (48"/52") Up to 9.0 mph (60")
FEATURES	7-Gallon Fuel Capacity, Standard Hour Meter, Commercial-Grade Deck, Rollover Protection System, Seat Suspension System	9-Gallon Fuel Capacity, Standard Hour Meter, Heavy Duty Air Cleaner, Commercial-Grade Deck, Rollover Protection System, Seat Suspension System, Optional Power Bagger Available
FRONT CASTER	13"x5.0-6" Pneumatic	13"x5.0-6" Pneumatic (48"/52") 13"x6.5-6" Pneumatic (60")
DRIVE TIRES	20"x8-10"	22"x9.5-12" (48"/52") 23"x10.5-12" (60")



PIONEER E-SERIES FEATURES

EVEN FILLING UP IS EFFICIENT

The Pioneer's hefty, 7-gallon fuel tank with a single-fill location means less time pumping gas. And, more time cutting grass.



SAFETY-PLUS

The Pioneer's Rollover Protection System is an important safety feature. Even more, its rear-sloping design helps deflect branches away from the operator.



LOCK DOWN

An easy-to-use transport lock holds the deck up for trailering and enables manual feathering on uneven terrain.



AVAILABLE ACCESSORIES

- Micro-Mulch™ System
- Sun Shade
- Equipment Cover
- Non-Powered Collection System (Six bushel)
- Hitch Kit
- Jack and Receiver
- Hella® Work Lamp Kit
- Full-Suspension Seat



PIONEER S-SERIES FEATURES

REAR-DISCHARGE DECK (60")

The hefty 60" rear-discharge deck allows for increased productivity while mowing around trees, buildings and landscapes. Even more, its controlled discharge helps keep the operator clean.



COMFORT COUNTS

The Pioneer features a bolstered seat with coil-spring suspension. Not a big deal unless, of course, you're the one sitting in the seat. Then you'll thank us.



MAINTENANCE-FREE SPINDLES

Commercial-grade, cast aluminum spindles feature sealed bearings to resist damage from moisture and impact, with no annual greasing required.



AVAILABLE ACCESSORIES

- Micro-Mulch™ System
- Sun Shade
- Equipment Cover
- Powered Bag Collection System (Eight bushel)
- Hitch Kit
- Jack and Receiver
- Hella® Work Lamp Kit
- Full-Suspension Seat
- Finish Cut Baffle (On Rear-Discharge Model)

**MORE DRIVE.
MORE DURABILITY.
MORE OF WHAT
YOU'RE LOOKING FOR.**

Go ahead and ask anyone who's ever owned an Exmark and they'll tell you that our mowers are built to deliver years of worry-free operation. Cut after cut. Lawn after lawn. Season after season.



THE STANDARD OF EXCELLENCE

For decades, Exmark's Lazer Z® has been the standard of excellence for commercial-grade, zero-turn mowers. Today, it is coveted by landscape pros and homeowners alike for its unmatched cut quality, productivity, durability and performance. And, just when you thought the best couldn't get any better—our newest Lazer Z's have 40% fewer parts, making them more productive and easier to maintain, too. That's a win-win for everyone.

COMPARISON CHART

	LAZER Z® E-SERIES	LAZER Z® S-SERIES	LAZER Z® X-SERIES
ENGINES	Kawasaki® FX651 V-Twin Kawasaki® FX801 V-Twin Kohler® CV732 Command™ Kohler® CV740 Command™ EFI Kohler® CV742 Command™	Kawasaki® FX651V V-Twin Kawasaki® FX801V V-Twin Kohler® ECV740 Command™ EFI Kohler® CV749 Command™ EFI Kohler® PCV740 Command™ EFI PROPANE	Kawasaki® FX801V V-Twin Kawasaki® FX921V V-Twin Kohler® ECV740 Command™ EFI with RED Technology Kohler® ECV940 Command™ EFI with and without RED Technology Kohler® ECV980 Command™ EFI with and without RED Technology
DECK SIZE	48"/ 52"/ 60"/ 72"	48"/ 52"/ 60"/ 72"	52"/ 60"/ 72"
DECK STYLE	Full-Floating UltraCut™ Series 4 7.75" Cutter Housing, 25mm Spindle Shaft with Splined Blade Driver Full-Floating Rear-Discharge Deck 7.75" Cutter Housing, 25mm Spindle Shaft with Splined Blade Driver	Full-Floating UltraCut™ Series 4 7.75" Cutter Housing, 25mm Spindle Shaft with Splined Blade Driver	Full-Floating UltraCut™ Series 6 7.75" Cutter Housing, 30mm Spindle Shaft with Splined Blade Driver Full-Floating Rear-Discharge Deck 7.75" Cutter Housing, 25mm Spindle Shaft with Splined Blade Driver
SUSPENSION PLATFORM OPTION	AVAILABLE	NOT AVAILABLE	AVAILABLE
WARRANTY	2-Year Commercial, 4-Year Consumer or 500 Hours, 3-Year Engine	3-Year Commercial, 5-Year Consumer or 750 Hours, 3-Year Engine	3-Year Commercial, 5-Year Consumer or 750 Hours, 3-Year Engine
HYDRO DRIVE SYSTEM	12cc	12cc	12cc (52") 16cc (60"/ 72")
SPEED	Up to 8.0 mph (48"/ 52") Up to 10.0 mph (60"/ 72")	Up to 10.0 mph	Up to 10.0 mph (52") Up to 11.5 mph (60"/ 72")
FUEL CAPACITY	8 Gallons	12 Gallons	12 Gallons
FRONT CASTER	Refer to Page 67 of the Specs	Refer to Page 68 of the Specs	Refer to Page 69 of the Specs
DRIVE TIRES	Refer to Page 67 of the Specs	Refer to Page 68 of the Specs	Refer to Page 69 of the Specs

SMARTER ON-BOARD INTELLIGENCE.

RED
EQUIPPED

exmark

OUR GROUND-BREAKING, PATENTED **RED** TECHNOLOGY IS A GAME-CHANGER.

Exmark's advanced **RED** technology platform powers unprecedented communication among key mower systems. Benefits include more productivity and significantly better fuel efficiency.

DEFINED OPERATION MODES

On **RED**-equipped mowers, engine speed is controlled by a three-position rocker switch that allows operators to match power to specific mowing conditions. Efficient Mode offers peak performance power with reduced fuel consumption, emissions, noise, and overall wear on the machine. Max Mode provides increased power for operating in demanding conditions. Low Mode enables optimal operation in wet conditions and helps reduce deck packing for a superior cut.



SYSTEM MONITORING RED

Our **RED** system monitoring tracks engine temperature, oil pressure and the overall electrical system. When critical thresholds are exceeded, the machine is placed in Safe Transport Mode—reducing the potential for engine damage and allowing return for servicing. A visual warning of critical system issues is also displayed.

CLUTCH SAVER

The **RED** system manages on-the-fly PTO engagement/disengagement, increasing clutch life and improving operator efficiency. The system automatically adjusts the engine speed and then engages at 2,750 rpm and disengages at 2,500 rpm, regardless of throttle position.

IMPROVED EFFICIENCY

EFI WITH E-GOV AND RED TECHNOLOGY BOOSTS FUEL EFFICIENCY UP TO 41%.

Because traditional mechanical governors are slow to respond to increasing engine loads, engines must run at a higher rpm to produce the needed power, which increases fuel consumption and wear on the engine. The EFI with E-Gov is specially designed to eliminate governor droop, allowing you to maintain engine rpm and blade speed, even under varying conditions. You save fuel. And that means you save money, too.

TAKING GREAT PAINS TO ENSURE YOUR COMFORT.



THE NEXT GENERATION OF MOWER COMFORT

LAZER Z SUSPENSION PLATFORM

At Exmark, we weren't satisfied with simply making our Lazer Z mowers easier to operate and maintain. Today, we're using our expert knowledge in operator comfort and the game-changing science of ergonomics to also make them more comfortable to use.

Our quantum leap in comfort revolves around isolating the operator platform from the rest of the machine. This is made possible thanks to plush foam seats covered in our patented vibration control stretch fabric and featuring a sophisticated suspension system, ISO mounts that allow side-to-side compliance, and is topped off with front and rear shocks adjustable to the preferred comfort level and trailing arms eliminating side-to-side sway. The result is a full 3 1/2 inches of vertical travel that both increases comfort and reduces fatigue.

For commercial landscapers, that's money in the bank. Because if you're more comfortable, you'll be able to reduce fatigue and cut more, making your business more profitable.

And if you're a homeowner, well, the results speak for themselves. You'll not only feel great about how your lawn looks, but also about the way you feel after the mowing is done.



EXPERT ERGONOMICS

NEW AND IMPROVED LAZER Z SEATING SYSTEM

For some companies, improving operator comfort means more padding, and more springs. At Exmark, we've taken comfort to a whole new level, becoming experts in the game-changing science of ergonomics. We know that if operators are more comfortable, their businesses will be more profitable.

OUR SCIENTIFIC METHODOLOGY—UTILIZING PRESSURE MAPPING, AND ANALYZING THE FATIGUE FACTORS OF VERTICAL AND LATERAL MOTION—CONTRIBUTES TO THE DEVELOPMENT OF THE NEXT GENERATION OF MOWER COMFORT.

Scissor Link Ball Bearing Suspension – 3" Vertical Travel



Custom Cut-n-Sew Vinyl and Plush Foam

Patented EVC – Elastomeric Vibration Control Stretch Fabric – 1.25" Travel



Patented Iso-Mount Isolation System – .5" Vertical and .75" Lateral Isolation



MINIMIZING SERVICE VISITS. MAXIMIZING ON-LAWN PERFORMANCE.

EASIER MAINTENANCE

YOU STILL NEED TO DO IT. JUST A LOT LESS OF IT.

Even in this age of advanced technology, sometimes, simpler means better. Our newest Lazer Z[®] mowers, for example, have 40% less parts than their predecessors. That's 40% fewer things to inspect, lubricate, adjust, remove, and fix if they break. This is another way we're working to keep our mowers out of the shop. And, hard at work for you.

STRUTS/FRAME SYSTEM

While we were designing the latest Lazer Z[®] mowers, our goal wasn't just to reduce parts. We also wanted to improve the parts we kept, like the deck struts. That's why we now use patented automotive-style, maintenance-free, greaseless bushings for longer life.



FEWER GREASE POINTS

Today's Lazer Z[®] delivers maximum performance with minimum maintenance. Spindles are maintenance free with just four grease points, and they only need to be maintained approximately once a year.



ON-BOARD DIAGNOSTICS

Now you can check vital functions with just a glance at the digital screen. All Lazer Z[®] units come with an electronic fuel gauge with low-fuel warning, battery voltage warning, hour meter and OPC safety switch monitoring. It all adds up to make troubleshooting easier than ever.



HYDRO-DRIVE SYSTEM UPGRADES

While working on new ways to improve the already awesome Lazer Z[®] drive system, our engineers devised a great way to keep hoses from leaking. They eliminated them. Then they added a few new things, like tougher bearings and an improved cooling system.



BETTER TRACTION, SMOOTHER HANDLING

IT ALL STARTS WITH BALANCE

We wanted the newest Lazer Z[®] mowers to be even more responsive, easier to operate, and—ultimately—even more productive. So, we started with enhancing the stability and handling. First, we designed a frame that lowered the center of gravity. Then, we began relocating components, especially the heavier ones, placing them as low and near the center of the frame as possible. Finally, we relocated the seat, so even the operator's weight would help improve traction. The result was the most balanced zero-turn on the market today.

ROLLOVER PROTECTION-PLUS

Yes, the Lazer Z's advanced Rollover Protection System (ROPS) is a safety feature. But, it's also a heavy component that elevates the center of gravity. To help counteract that elevation, we mounted the ROPS on the frame where it would improve balance while optimizing the Lazer Z's weight and profile. Its rearward-sloping design also helps divert low-hanging branches away from the operator. And, yes, operators think that part is awesome, too.



A FUEL SYSTEM DESIGNED TO DO MORE

We set out to combine the Lazer Z's two side fuel tanks into one large tank, with a single-fill location for greater efficiency. Then a great thing happened. Turns out, this redesign also created the opportunity to locate the tank under the seat, placing the weight of the fuel low and in the center of the machine. That improved overall balance and handling. We'll call it a bonus.



HIGH-PERFORMANCE, VERTICAL-SHAFT ENGINE

Traditionally, engine performance has been measured in "horsepower" and "torque." At Exmark, we've added "position." Because, like its other heavier components, the Lazer Z's vertical-shaft engine is positioned low in the frame to improve handling performance. So, in addition to working in forward and reverse, it also works when moving left and right.





LAZER Z
E-SERIES

LAZER Z® E-SERIES FEATURES

DECK SUPPORT SYSTEM

A cutting deck this good deserves support that's every bit as good. That's why we developed a Panhard rod and strut system to eliminate side-to-side deck sway. Yes, it reduces wear. And maintenance costs, too.



UNIBODY FRAME

Our one-piece body frame is a great example of "less-is-more" engineering. Fewer parts equal more strength. And, more durability. So, at least in this case, less is way more.



HYDRO DRIVE, SIMPLIFIED

Our innovative hydro-drive system needs only simple, annual maintenance, because it has no hoses to leak and just one easy-to-change belt. As an added bonus, it also lowers the center of gravity for improved handling.



AVAILABLE ACCESSORIES

- Micro-Mulch™ System
- Full Suspension Seat
- CustomRide™ System
- Sun Shade
- Turf Stripper
- Equipment Cover
- UltraVac® Collection Systems
- Anti-Scalp Roller (Available on the 60" Deck)
- Trash Container
- Air Ride Suspension Seat
- Seat Isolation System
- Jack and Receiver
- Hella® Work Lamp Kit
- Powered Deck Lift
- Finish Cut Baffle Kit on Rear Discharge Deck

LAZER Z® S-SERIES FEATURES

DOING MORE WITH PROPANE

The EFI system optimizes fuel delivery in real-time, improving efficiency and performance considerably. When you combine this with the lower cost of propane, operating expenses should be significantly lower than typical gas-powered mowers.



LESS TIME AT THE PUMP

Gas-powered S-Series models have a single 12-gallon tank with one fill location.



BUILT TO LAST

There's tough. And, there's Exmark tough. That's what you get with this 10-gauge, formed and continuously seam-welded top, and a 7-gauge side skirt. With welded spindle mounting sites. And, full-floating, 4-point suspension with four adjustable anti-scalp rollers.



AVAILABLE ACCESSORIES

- Micro-Mulch™ System
- Full Suspension Seat
- CustomRide™ System
- Jack and Receiver
- Hella® Work Lamp Kit
- Powered Deck Lift
- Anti-Scalp Roller (Available on the 60" Deck)
- Trash Container
- Air Ride Suspension Seat
- Sun Shade
- Turf Stripper
- Equipment Cover
- UltraVac® Collection Systems



LAZER Z
S-SERIES



LAZER Z
X-SERIES

LAZER Z® X-SERIES FEATURES

PATENTED RED TECHNOLOGY

RED Technology enables communication and response between key systems on your mower—with defined operation modes, system monitoring and clutch saver features.



ULTRACUT™ SERIES 6 DECK

Our full-floating deck uses double-row bearings with a splined blade driver to stop bolt tightening on impacts. Our patented bearing design on idler arm pivots needs only once-a-year service.



HYDRO-DRIVE, SIMPLIFIED

Our 16cc hydro-drive system has no hoses to leak and just one, easy-to-change belt. Only simple, annual maintenance is required. It also lowers the center of gravity for improved handling.



AVAILABLE ACCESSORIES

- Micro-Mulch™ System
- Air Ride Suspension Seat
- Jack and Receiver
- Hella® Work Lamp Kit
- Powered Deck Lift
- Anti-Scalp Roller (Available on the 60" Deck)
- Trash Container
- Sun Shade
- Turf Stripper
- Equipment Cover
- UltraVac® Collection Systems
- Finish Cut Baffle Kit on Rear Discharge Deck

LAZER Z® DS-SERIES FEATURES

REAR-DISCHARGE DECK

Available in both 60- and 72-inch cutting widths, the rear-discharge deck offers increased clipping discharge control, reduced noise, and the ability to trim on both sides of the cutting deck—all while keeping the operator clean.



OVERHEAT PROTECTION

To prevent overheating, the commercial Z tracks engine temperature and oil pressure. When critical levels are exceeded, the machine is automatically placed in safe transport mode—disengaging the PTO.



FRAME STRENGTH

Because the DS-Series is built to handle extreme mowing conditions, its frame has to not only be strong, but amazingly strong. It is—thanks to heavy-duty, welded, tubular-steel.



AVAILABLE ACCESSORIES

- Micro-Mulch™ System
- Air Ride Suspension Seat
- Jack and Receiver
- Hella® Work Lamp Kit
- UltraVac® Collection Systems
- Trash Container
- Sun Shade
- Turf Stripper
- Equipment Cover
- Finish Cut Baffle Kit on Rear Discharge Units



LAZER Z
DS-SERIES

A SUPERIOR VACUUMING AND DEBRIS COLLECTION SOLUTION.

With the Navigator's patented fill reduction and larger-diameter blower, you can vacuum a perfectly mowed lawn in no time. Our newest model generates significantly more airflow for unmatched vacuuming and debris collection, working at speeds up to 7 mph. And, the higher blade tip speed slices grass into even finer particles. The rear-discharge deck is designed with two-sided trimming so you can more accurately control discharge, keeping flowerbeds and walkways free of clippings. It's perfect for anyone who wants more responsiveness and more control.



NAVIGATOR® FEATURES

ENGINES	Kohler® CH640 Command™ Kohler® CH730 Command™ EFI Kohler® CH740 Command™
DECK SIZE	42" / 48"
DECK STYLE	4" Deep, Full-Floating Fabricated <i>Heavy Duty Cast Iron Right-Angle Gearboxes</i>
WARRANTY	2-Year Commercial, 2-Year Consumer or 500 Hours, 3-Year Engine
HYDRO DRIVE SYSTEM	12cc
SPEED	Up to 7.0 mph
FRONT CASTER	8"x3.0-4" Semi-Pneumatic
DRIVE TIRES	18" x 10.5-10"

FILL REDUCTION

Choice is good. The Navigator's patented fill-reduction system lets you bag 100%, bag 33% and mulch 66%, or mulch 100%. All of this is made possible thanks to its versatile cutting deck and innovative baffle system.



"FEATHERTOUCH" CONTROLS

As the name implies, you don't have to muscle the Navigator® to make it work. Our FeatherTouch controls make maneuvering in tight spots a breeze.



MORE CAPACITY, MORE PRODUCTIVITY

The optional powered dump attachment system means less time emptying and more time mowing. Our exclusive baffle design fills evenly, back to front, to maximize efficiency.



AVAILABLE ACCESSORIES

- Micro-Mulch™ System
- Quick Hitch
- Navigator Snow Blower
- Powered Dump Attachment System
- Dump Tubs (9.5 bushels)
- CustomRide™ System
- Navigator Rotary Broom



**WORLD-CLASS
PRODUCTS AND SERVICE.
WORLD-CLASS VALUE.**

What are your weekends worth?

Exmark is synonymous with high-performance, low-maintenance machines built to provide years of worry-free operation. While they may cost a bit more, our products will prove time and time again to be worth every penny—particularly when getting off the lawn and onto fun is a priority. Talk about a consideration you can't put a price tag on!

MORE VERSATILITY. MORE VALUE.



NOW, YOU CAN GET EVEN MORE RETURN ON YOUR INVESTMENT.

You probably know all about Exmark's legendary reliability and durability. But, what you might not be as familiar with is our versatility. Today, Exmark offers a wider range of optional accessories than ever before. They're all designed to help you get the most value out of your machine. And, easy access to genuine Exmark parts allows you to get the most work out of your machine, too.

MINIMUM DOWNTIME MEANS MAXIMUM UPTIME

Exmark designs, engineers, and tests our own superior OEM parts so you know they're made to work in perfect harmony with your machine. When you need a part for your Exmark, there's only one place to go—right to the source.

EXMARK PARTS PLUS®—PARTS OVERNIGHT OR FREE

If we don't have the Exmark part that you need in stock, we'll get the part and have it available to you on the next business day, or the part is free!**

**See your local Exmark dealer for complete warranty details.

**Restrictions apply; please contact your Exmark dealer for further details.
Dealer participation is optional. Program not available in Hawaii and Canada.

GO ORIGINAL. OR RUN THE RISK OF NOT GOING AT ALL.

Lots of companies may be able to provide you with parts for your Exmark machine. But, there are significant pitfalls to using non-original parts. They may look right. They may feel right. They may even seem to fit right. But, when it comes down to keeping your Exmark running like a dream, only Exmark has the expertise and know-how to get the parts right, every time.

We've developed our own performance products, too. Think twice about using lubricants and hydraulic fluids designed for cars and trucks. Instead, trust Exmark Hydro Oil, Engine Oil and Fuel Treatment. All are specially formulated to maximize the performance of our hard-working engines.

PERFORMANCE PRODUCTS



EXMARK® PREMIUM ENGINE OIL

Exmark offers a complete selection of engine oil viscosities, all formulated to perform in any environment. Each viscosity has the same synthetic formulation to give you what you need, even in punishing conditions. Each grade has been designed to the highest quality, making them perfect even for diesel applications.



EXMARK® PREMIUM UTV OIL AND GEAR LUBE

This synthetic formulation is everything you need to keep your Exmark UTV performing at it's best.



EXMARK® PREMIUM ENGINE OIL 10W-50

This synthetic formulation is far more stable and robust than cheap oil from that auto parts store or big retail outlet. Exmark Premium is always the right choice for your mower.



EXMARK® FUEL TREATMENT

Restore and refresh your mower's performance with our newly formulated, E10-approved fuel treatment. Specially designed to dissolve carbon and varnish from injectors, carbs, valves and fuel lines.



EXMARK® PREMIUM HYDRO OIL

Our Premium Hydro Oil is specially formulated to enhance control and performance of today's most sophisticated hydraulic systems. It delivers superior anti-wear protection and boasts twice the shear stability of competing oils.



HYDRO MAINTENANCE KIT

Kit includes:

- 4 Bottles Exmark® Premium Hydraulic Oil
- 1 Belt
- 2 Hydro Filters



AIR RIDE SUSPENSION SEAT

Our new air ride seat gives you the best comfort available. Sophisticated air suspension technology virtually eliminates bumps, jarring or vibration.

(Designed to fit all of the latest Lazer Z® models.)



FULL-SUSPENSION SEAT

This low-profile, full-suspension seat enhances operator comfort and lumbar support by adjusting to individual weight.

(Designed to fit all Lazer Z® models.)



RED LOCKOUT MODULE

This easy-to-install lockout module maximizes fuel savings on RED-equipped units. Embedded with our most advanced technology, it keeps your mower in Efficient Mode, regardless of mowing conditions.



ROPS SUN SHADE

Made of heavy-duty, water-repellent canvas for maximum durability, this shade mounts easily to your machine's Rollover Protection System (ROPS). Easily removable for transport.

(Fits all Lazer Z® and Pioneer models. Does not fit Quest™.)



QUEST SUN SHADE

Made of heavy-duty, water-repellent canvas for maximum durability, the Quest Sun Shade mounts quickly behind the operator's position. Easily removable for transport.

(Fits all Quest™ models.)



Custom Ride Seat Suspension System

CUSTOMRIDE™ SYSTEM

Our CustomRide suspension system easily mounts to your existing EVC operator seat. System features enable each operators to customize suspension settings to his or her individual weight and personal preference. A great value when compared to more expensive full-suspension seats.

(Fits all Lazer Z® models.)



SEAT ISOLATION SYSTEM

Our Seat Isolation System features a 3-dimensional, motion-isolation design to reduce operator fatigue. Rubber mounts allow 0.5-inch free movement in all directions, resulting in 12-hour days that feel more like six.

(Fits most Lazer Z® models.)



12-VOLT POWER ADAPTER

A really nice extra. Conveniently located to make it easy to use. Works great for phone chargers or any other operator comfort accessory.

(Phone not included.)



JACK AND RECEIVER

Jack attaches easily for smooth lift without hassle or strain, thanks to its comfortable, ergonomic design, so you can safely access the underside of your zero-turn mower's deck. Built for years of reliability.

(Fits most Lazer®, Vantage®, Pioneer and Quest™ models.)



TRASH CONTAINER

Located within easy reach of the operator, our trash container features a hefty 2.5-gallon capacity and durable, easy-to-clean mesh receptacle.

(See dealer for fit-up information.)



EXMARK® SPLASH GUARDS

Proud of your Exmark? Show your Exmark pride on your car or truck with flexible splash guards. Fiberglass reinforcement and flexibility at low temperatures make them durable enough to withstand the same kinds of punishment your mower endures.



EXMARK® FLOOR MATS

Our super-durable, heavy-duty mats are designed to channel water and debris away from your vehicle's carpet, keeping things every bit as clean and fresh as the lawns your Exmark machine mow.



EQUIPMENT COVER

Protect your zero-turn mower from the elements with this sturdy, waterproof cover. Constructed from tough 600-denier polyester, it's abrasion- and tear-resistant. Elastic opening provides a snug, secure fit.

See dealer for fit-up information.

Available in two sizes.

Small (116-1378)—Fits Quest™ units.

Large (116-1379)—Fits all Lazer Z® and Pioneer

Not available for Lazer Z® with 72" decks



HELLA® WORK LAMP KIT

Keep on mowing—even after the sun goes down—with bright, 27-watt halogen power from this Hella® Work Lamp Kit. Mounts easily to your ROPS bar. The ultra-durable lenses repel dust, withstand impact, and can even stand up to high-pressure cleaning. With twice the illumination of a conventional work lamp, the kit also includes a pivot base and easy bulb replacement.



EXMARK TURF STRIPER

Customize your property with professional striping using a smooth-operating roller design. Installs quickly—using existing mounting points—and adjusts easily for varying cutting height settings. As important, it won't affect your ability to get up and over curbs.



3-BUSHEL BAGGER

This 3-bushel grass catcher is lightweight, easy to attach, and fits Exmark Lazer Z®, Pioneer, Vantage® and wide-area walk-behinds.

(Does not fit Vantage® 52" propane model.)

ALL MOWERS



OPERATOR-CONTROLLED DISCHARGE

The infinitely adjustable blocker door opens and closes, enabling you to quickly control discharge when mowing around parked cars and windows. Goes on and off easily, with no tools required.



MICRO-MULCH™ SYSTEM

The aerodynamically designed deck, baffles, and blades combine to create airflow patterns that circulate leaves and grass again and again for repeated cuttings and more even dispersal deep into the turf. Mulching baffles also reduce grass buildup and clumping, so your mower's underside stays cleaner.

WALK-BEHIND ATTACHMENTS



WALK-BEHIND WEIGHT SET

Adds weight to the front end of your Exmark® walk-behind. Enhances stability and control when using an Exmark® StandOn. Comes in pairs. Each weighs 9.5 pounds.

(Excludes Turf Tracer® X-Series.)



EXMARK STANDON

This pull-behind sulky increases productivity while reducing workload. Featuring an innovative QuikMount system and convenient, spring-loaded latch. Expanded operator deck with foot guard means safer, more comfortable riding.

COMMERCIAL 21 WALK-BEHIND MOWERS



COMMERCIAL 21 GAS TANK

Maximize your mowing power by adding more fuel capacity. This 1-gallon gas tank fits easily onto your engine, enabling you to go even farther before refueling.

(Available for ECSKA21 model.)



COMMERCIAL 21 MULCH PLUG

Transition from bagging to mulching, quickly and easily.



COMMERCIAL 21 WHEEL WEIGHT KIT

Stay productive, even in wet, sloppy conditions. Each wheel plate weighs 3 pounds, giving you excellent performance, even with a full load of grass.



COMMERCIAL 21 ENGINE GUARD

Protect your engine when mowing around low-hanging branches and other obstacles.



COMMERCIAL 21 DECK WEAR KIT

Help your deck last longer—even in the toughest conditions—with this heavy-duty deck wear kit.



COMMERCIAL 21 9.5" DIAMETER WHEELS

For extended cut height, tough terrain, and when reduced rolling resistance is needed, this larger-diameter wheel kit boosts performance and productivity.

NAVIGATOR



NAVIGATOR® POWER DUMP

Without even leaving your operating position, this power dump accessory can manage a full load of grass with the simple push of a button. Or, if you'd rather dump by hand, the Power Dump automatically disengages and re-engages the hopper with no operator intervention.



NAVIGATOR® QUICK-HITCH ATTACHMENT SYSTEM

This hitch system replaces the mowing deck and makes it easy to connect and remove attachments. Blower or blade attachments can be utilized from operator controls.



NAVIGATOR® SNOW BLOWER

Constructed with durable 12- and 16-gauge steel, this heavy-duty, two-stage, 48"-wide blower attachment features a high-speed, 4-blade impeller. Blower controls and rotational chute are easy to maneuver from the operator's seat. Requires Quick-Hitch Attachment System and fits up without tools.



NAVIGATOR® DUMP TUBS

Debris can be quickly and easily managed with these two polyethylene tub inserts. The removable tubs allow the weight of a full, 9.5-bushel hopper to be split and unloaded, one tub at a time.



NAVIGATOR® ROTARY BROOM

Dethatch or clear debris or light snow with this durable 48" polypropylene rotary broom attachment. Can be manually angled 20 degrees to the left or right from the operator's position. Requires Quick-Hitch Attachment System (sold separately), and fits up without tools.

(Manufactured and marketed by MB Companies.)

MAKE QUICK WORK OF GRASS CLIPPINGS.



UltraVac™ collection systems have been designed by our engineers to help you do more, in less time, with the least amount of effort.

ULTRAVAC™ X-SERIES

- Discharges grass with one simple motion of the release lever.
- Features a commercial-grade steel and polyethylene hopper with rear-discharge door (7 bushels or 11 bushels).

ULTRAVAC™ S-SERIES

- Switch between bag discharge and side discharge with quick-attach.
- Large diameter tubes mean less clogging.
- Compact design minimizes trailer space for easy maneuverability.
- Sealed hoods mean less dust.
- Two or Three UltraVac® (8 to 12 bushels).

ULTRAVAC™ E-SERIES

- Power plus durability in one low-cost package.
- Commercial-grade, cloth mesh bags with reinforced bottoms.
- Full 8.0-bushel commercial capacity.
- 5-blade, 0.25-inch, abrasion-resistant steel impellers provide the power you'll need.
- Sealed, non-greaseable impeller bearings for longer life.

NON-POWERED COLLECTION SYSTEMS

- Simple, effective design and ease of installation.
- Larger-diameter, smooth-bore discharge tubes for uninterrupted flow from deck to hopper.
- Sturdy, large-capacity collection bags.
- Durable, injection-molded hood.
- Quick-attach deck boot.
- Streamlined design enables better trimmability.
- Low profile to get under obstacles easier.

ULTRAVAC™ ULTRAVAC FIT UP (S/N >920000)

LAZER Z E-SERIES (Models with LZE Prefix)				
DECK SIZE	BAG STYLE	QUICK DUMP	COMPLETING KIT	SUSPENSION PLATFORM
484	LZUV2B	LZUVQD7	116-2084	—
524	LZUV2B	LZUVQD7	116-2085	—
604	LZUV3B	LZUVQD11	116-2086	Completing Kit + 132-5092

LAZER Z S-SERIES (Models with LZS Prefix)			
DECK SIZE	BAG STYLE	QUICK DUMP	COMPLETING KIT
484	LZUV2B	LZUVQD7	116-2084
524	LZUV2B	LZUVQD7	116-2085
604	LZUV3B	LZUVQD11	116-2086
604	LZUV3B	LZUVQD11	126-4744
724	LZUV3B	LZUVQD11	116-2087

LAZER Z X-SERIES (Models with LZX Prefix)				
DECK SIZE	BAG STYLE	QUICK DUMP	COMPLETING KIT	SUSPENSION PLATFORM
526	LZUV2B	LZUVQD7	109-9625	—
606	LZUV3B	LZUVQD11	109-9627	Completing Kit + 132-5092
726	LZUV3B	LZUVQD11	109-9629	Completing Kit + 132-5092

PIONEER S-SERIES (Models with PNS Prefix)*			
DECK SIZE	BAG STYLE	QUICK DUMP	COMPLETING KIT
483	116-3000 (UVE)	—	116-2085
483	116-3001 (UVE)	—	116-4887
523	116-3000 (UVE)	—	116-2086
523	116-3001 (UVE)	—	116-4889
604	116-3001 (UVE)	—	116-6498

*The 116-3000 will fit all PNS deck sizes except the 60" model. The 116-3001 will fit all PNS deck sizes including the 60" model.

TURF MANAGEMENT IS WAY MORE THAN JUST CUTTING LAWNS.

Today, Exmark offers more products and more solutions especially designed for landscaping uses and increase revenue opportunities. And, for homeowners who just want a great looking lawn.



SPREADER-SPRAYER



IT'S NEW. AND, THERE'S NEVER BEEN ANYTHING LIKE IT.

Flat out, the industry's most advanced, most innovative stand-on spreader-sprayer. This easy-to-operate, easy-to-maneuver machine offers our most advanced lean-to-steer technology, outstanding versatility and amazing stability—even on hillsides.

SPREADER-SPRAYER FEATURES

INNOVATIVE LEAN-TO-STEER TECHNOLOGY

The advanced design allows the operator to control all motion with just one hand.



AGITATION SYSTEM

Thanks to our innovative agitation system, two inductive nozzles allow you to mix chemicals in the tank and keep them in suspension.



INTUITIVE CONTROLS

Everything you need is right at your fingertips—allowing you to make easy adjustments while maintaining total control.



21" AERATOR**WALK-BEHIND AERATOR**

Exmark innovation has produced the absolute best walk-behind aerators in the business. These sturdy machines combine the durability, high performance and ease-of-use you're looking for, including the ability to aerate in both forward and reverse. They also feature a hydro transmission with infinite speed from 0 to 4.0 MPH.

COMMERCIAL-GRADE

The S-Series features a super-durable Kawasaki® engine with infinitely variable drive speed and powered reverse for superb maneuverability.

**THE KEY TO QUALITY AERATION**

If it's worth doing, it's worth doing well. That's why our models feature durable, heavy-duty, self-cleaning tines, and pull 4.6 quality plugs per square foot.

**HEAVYWEIGHT PERFORMANCE**

The S-Series comes standard with two weights, with space for an optional third weight kit so you can add an additional 30 lbs. when working on heavy or extremely compact soils.

**30" STAND-ON AERATOR****STAND-ON AERATOR**

Because it works at speeds up to 7 MPH, you can aerate more than two acres per hour. In fact, with intuitive controls similar to our commercial-grade mowers, our stand-on aerator is incredibly easy to operate just about anywhere.

EXCEPTIONAL CORE DEPTH

This stand-on uses adjustable hydraulic pressure to drive the tines into the ground. A massive 1,200 pounds of down-pressure can be used to pull up to five-inch plugs.

**ZERO-TURN AGILITY**

Productivity isn't just about top-end speed. It's also about the need to negotiate tight spaces. With our Stand-On Aerator, you can do that quickly. And, easily. Just step off the pedal to raise the tines and you're ready to make a quick, zero-turn maneuver, then aerate some more.

**INCREDIBLY PRODUCTIVE—AND PROFITABLE**

Capable of aerating 1.7 acres an hour, this industry leading stand-on is a real money maker for landscape pros interested in new revenue opportunities.

**20" SLICER SEEDER****SLICER SEEDER**

Exmark's 20-inch Slicer Seeder is capable of performing three jobs with every pass—verticutting, dethatching and overseeding. That makes it three times easier to get better results. And, if you're a pro, generate more profits for your business.

COMMERCIAL-GRADE POWER

The Slicer Seeder's powerful Subaru® EX27 engine is fuel efficient, quiet and emissions-compliant, with EPA and CARB certifications. And, since it's a Subaru, you just know it will be reliable.

**LARGE-CAPACITY SEED HOPPER**

With its 40-pound seed hopper, our Slicer Seeder can help you handle big jobs without constantly stopping for more seed. So, you get done faster.

**DURABLE STEEL BLADES**

High-carbon steel blades remove thatch while providing maximum seed-to-soil contact. That enables superior germination and emergence for a healthy, great-looking lawn.

**36" ROTARY BROOM****ROTARY BROOM**

Providing four-season versatility, the Exmark Rotary Broom is an essential tool for landscape pros or anyone with a large-acreage lawn. It's perfect for cleaning up clippings, dethatching, snow and ice removal, and more. Best of all, it's an Exmark. So, you know it will get the job done.

SIMPLE HEIGHT ADJUST

The broom height can be fine tuned quickly and easily in 1/8-inch increments by simply moving two pins. This makes leveling essentially foolproof, and allows for precise surface engagement.

**USER-FRIENDLY CONTROLS**

Independent control levers engage the broom and drive systems separately. That means you only sweep what needs sweeping. Adjust the broom angle 40 degrees with a simple thumb latch.

**DESIGNED FOR DURABILITY**

You can adjust the commercial-grade Kohler Command™ pro engine for multi-season use simply by rotating the air intake. Six forward positions and two in reverse mean you can handle any job efficiently and effectively.

**AVAILABLE ACCESSORIES**

- Work Light
- Debris Box
- Tire Chains
- Turf Bristle K17
- Snow Cab Kit
- Turf Casters

WORK HARD. PLAY EVEN HARDER.

Looking for work truck utility without the size and expense of a full-size machine? If so, our two new side-by-side utility vehicles deliver the tools you need to get work done—providing off-road recreational fun, to boot.



COMPARISON CHART

	500S	700S
ENGINE	SOHC 36 hp 4-Stroke, 4 Valve with EFI	SOHC 46 hp 4-Stroke, 4 Valve with EFI
DISPLACEMENT	443cc	695cc
COOLING SYSTEM	Liquid with Fan	Liquid with Fan
GROUND SPEED	Up to 44 mph	Up to 55 mph
TRANSMISSION	Automatic CVT with EBS, Hi/Lo Range, Reverse and Park	Automatic CVT with EBS, Hi/Lo Range, Reverse and Park
DRIVE SYSTEM	2/4WD	2/4WD+Electric Front Differential Lock
FRONT/REAR BRAKES	Hydraulic Disc	Hydraulic Disc
FRONT/REAR SUSPENSION	Double A-Arm	Double A-Arm
FRONT/REAR TRAVEL	10"	10"
FRONT/REAR TIRES	FRONT: 26"x9-14" REAR: 26"x11-14"	FRONT: 26"x9-14" REAR: 26"x11-14"
WHEELS	Steel	Aluminum
TOTAL PAYLOAD	1100 lbs.	1500 lbs.
CARGO CAPACITY	600 lbs.	1000 lbs.
TOW CAPACITY	1500 lbs.	1500 lbs.
POWER STEERING	NOT AVAILABLE	OPTIONAL

ON-THE-FLY INNOVATION

Both of Exmark's UTV models tout 2- or 4-wheel-drive capability to deliver the productivity professionals need, allowing them to simply shift on the fly into 4WD. And, our customizable 2-in-1 tilting cargo box can be transformed into a flatbed in minutes.

WORK-AND-PLAY VERSATILITY

Our new utility vehicles are perfect for getting work done and having fun. Whether hauling or pulling heavy loads or simply enjoying an off-road ride, you'll love their versatility.



500S



700S

500S AND 700S FEATURES

STANDARD FRONT BRUSH GUARD AND 2" RECEIVER

There is no limit to the terrain you can tackle or what you can tow. With a standard front brush guard and 2" receivers in the front and rear, you are ready for any job, anywhere.



DIGITAL DISPLAY

The digital gauge features 14 critical operation information indicators: clock, hour meter, fuel level, mode button, set/reset button, odometer/trip, gear position, speedometer/tachometer, differential lock (700S model), high beam, temperature and oil pressure.



INTEGRATED PARKING BRAKE

The shift lever is strategically located on the dash for added convenience, and it integrates a park gear for parking on steeper grades.



10" OF SUSPENSION TRAVEL

No matter how demanding the job site, utilize the adjustable shocks to maximize the full 10" of travel and 10" of ground clearance in your suspension to conquer every obstacle in your workday.



CONVERT FROM CARGO BOX TO FLAT BED

Carry anything, anywhere. The convertible cargo box features up to 600 or 1,000 lbs. of cargo capacity, and sides that remove in minutes to create a flatbed for hauling materials of all shapes and sizes.



CONVERTIBLE DUMPING CARGO BOX

The 2-in-1 cargo box can be converted to a flatbed and features manual dumping for hauling and material placement.



AVAILABLE ACCESSORIES

- LXC Cab
- LXC Windshield
- LXC Rear Panel
- VXC Door (Pair)
- VXC Vented Windshield
- VXC Tip-Out Windshield
- VXC Rear Panel
- Rear Storage Box
- Cargo Box Lift
- Low Windshield
- Windshield Wiper (Manual)
- 3,000 LB Winch
- Rear View Mirror
- Front Bumper
- Nerf Bars
- Hitch Ball-1"
- Snow Plow
- 9-LED Light Bar
- Stereo Kit
- Switch Mount Panel
- Tiger Trax
- Snow Plow Tiger Trax Extension
- Exmark Premium Engine Oil UTV Formulation
- Exmark Premium UTV Extreme Conditions Gear Lube
- LXC Door (Pair)
- LXC Roof/Headliner
- VXC Cab
- VXC Full Windshield
- VXC Glass Windshield
- VXC 2-Piece Roof
- Cab Heater
- Front Under Hood Storage Box
- Box Enclosure
- Windshield Wiper
- Windshield Washer Fluid Kit
- Winch Synthetic Rope
- Side-View Mirrors (LH, RH)
- Rear Bumper
- Hitch
- Hitch Ball-2"
- Fast Clamp
- Baja Light Bar
- Oil Cooler
- Worksite Tire
- 4-Season Tracks Clutch
- Mounting Brackets For Tiger Trax
- Exmark Premium Engine Oil SAE 0W-40

**CUSTOMER SATISFACTION
IS OUR PRIORITY.**



Manufacturing the best-performing, most reliable mowers and turf care equipment that money can buy will only take you so far. That's why we back all of our products with the industry's most far-reaching dealer network, and then go even further to support our retail partners with an in-house customer care team that's second to none. It's a carefully thought-out concept that forms the backbone of our Exmark Advantage. In a nutshell, we're not satisfied until you are.

WALK-BEHIND MOWER SPECIFICATIONS

COMMERCIAL 21 S-SERIES								
Model	Engine	Blades	Cutting Width	Cutting Heights	Weight	Width	Length	Height
ECS180GKA21000	Kawasaki® FJ180V (180cc) [engine speed 3,300 rpm]	1 Blade at 20.5" [0.135"-thick (3.4 cm) alloy steel]	21" (53.3 cm)	1.0" (2.5 cm) to 4.5" (11.4 cm) in 0.5" (1.3 cm) increments.	112 lbs.	22 in. (55.9 cm)	62 in. (157.5 cm)	38 in. (96.5 cm)

DECK / FRAME / BLADE

DECK CONSTRUCTION–5"-deep, 0.25"-thick die-cast aluminum.

DECK STYLE–Fixed deck, rear-discharge bagger standard with option to mulch.

BLADE-TIP SPEED–Approximately 18,500 fpm.

EQUIPMENT

AIR FILTER–Dual element air cleaner.

DRIVE TIRES–9"x2.5", semi-pneumatic.

BAG CAPACITY–2.5 bushels (20 gallons).

SAFETY PACKAGE–Zone start.

POWER COMPONENTS

All engine models CARB-compliant.

DRIVE SYSTEM–Self-propelled, rear-wheel gear-driven.

TRANSMISSION–Belt-Drive.

SPEED CONTROL–Fingertip control.

SPEED–Up to 4.2 mph (6.6 kph) forward.

FUEL CAPACITY–2-quart (1.9-L) integral fuel tank.

COMMERCIAL 21 X-SERIES								
Model	Engine	Blades	Cutting Width	Cutting Heights	Weight	Width	Length	Height
ECK160CHN21000	Honda® GXV160 (160cc) [engine speed 3,300 rpm]	1 Blade at 20.5" [0.135"-thick (3.4 cm) alloy steel]	21" (53.3 cm)	1.0" (2.5 cm) to 4.5" (11.4 cm) in 0.5" (1.3 cm) increments.	112 lbs.	22 in. (55.9 cm)	62 in. (157.5 cm)	38 in. (96.5 cm)
ECK180CKA21000	Kawasaki® FJ180V KAI (180cc) [engine speed 3,300 rpm]	1 Blade at 20.5" [0.135"-thick (3.4 cm) alloy steel]	21" (53.3 cm)	1.0" (2.5 cm) to 4.25" (10.8 cm) in 0.25" (0.64 cm) increments.	114 lbs.	22 in. (55.9 cm)	62 in. (157.5 cm)	38 in. (96.5 cm)
ECK180CKA210BC	Kawasaki® FJ180V KAI (180cc) [engine speed 3,300 rpm]	1 Blade at 20.5" [0.135"-thick (3.4 cm) alloy steel]	21" (53.3 cm)	1.0" (2.5 cm) to 4.25" (10.8 cm) in 0.25" (0.64 cm) increments.	115 lbs.	22 in. (55.9 cm)	62 in. (157.5 cm)	38 in. (96.5 cm)

DECK / FRAME / BLADE

DECK CONSTRUCTION–5"-deep, 0.25"-thick die-cast aluminum.

DECK STYLE–Fixed deck, rear-discharge bagger standard with option to mulch.

BLADE-TIP SPEED–Approximately 18,500 fpm.

EQUIPMENT

AIR FILTER–Dual element air cleaner.

DRIVE TIRES–9"x2.5", semi-pneumatic.

BAG CAPACITY–2.5 bushels (20 gallons).

SAFETY PACKAGE–Zone start.

Blade Brake Clutch (BBC) on ECK180CKA210BC.

POWER COMPONENTS

All engine models CARB-compliant.

DRIVE SYSTEM–Self-propelled, rear-wheel gear-driven.

TRANSMISSION–Belt-Drive.

SPEED CONTROL–Fingertip control.

SPEED–Up to 4.2 mph (6.6 kph) forward.

FUEL CAPACITY–1-gallon (3.8-L) fuel tank.

COMMERCIAL 30								
Model	Engine	Blades	Cutting Width	Cutting Heights	Weight	Width	Length	Height
ECS180CKA30000	Kawasaki® FJ180V KAI (180cc)	2 Blades at 15.4" [0.135"-thick (3.4 cm) alloy steel tempered to RC 38-44]	30" (72.6 cm)	1.5" (3.8 cm) to 5.0" (12.7 cm) in 0.5" (1.3 cm) increments.	170 lbs.	31.9 in. (81 cm)	66 in. (167 cm)	38.25 in. (97.2 cm)

DECK / FRAME / BLADE

DECK CONSTRUCTION–4.6"-deep, stamped steel with welded reinforcements.

DECK STYLE–Fixed deck with 3 in 1; bag, mulch or side discharge.

BLADE-TIP SPEED–Approximately 18,500 fpm.

EQUIPMENT

AIR FILTER–Dual element air cleaner.

DRIVE TIRES–10"x3", semi-pneumatic.

BAG CAPACITY–2.5 bushels (20 gallons).

SAFETY PACKAGE–Blade Brake Clutch (BBC).

POWER COMPONENTS

All engine models CARB-compliant.

DRIVE SYSTEM–Self-propelled, rear-wheel gear-driven.

TRANSMISSION–Belt-Drive.

SPEED CONTROL–Fingertip control.

SPEED–Up to 4.2 mph (6.6 kph) forward.

FUEL CAPACITY–1-gallon (3.8-L) fuel tank.

METRO®								
Model	Engine	Blades	Cutting Width	Cutting Heights	Weight	Width	Length	Height
MGS481GKA322P0	Kawasaki® FS481V V-Twin [engine speed 3,600 rpm]	2 Blades at 16.25" [0.20"-thick (5.1 mm) alloy steel]	32" Series 2 (81.3cm)	1.0" (2.5 cm) to 4.25" (10.8 cm) in 0.25" (0.64 cm) increments.	421 lbs.	43.3 in. (110 cm)	73.0 in. (185.4 cm)	43.0 in. (109.2 cm)
MGS481CKA36200	Kawasaki® FS481V V-Twin [engine speed 3,600 rpm]	2 Blades at 18.00" [0.20"-thick (5.1 mm) alloy steel]	36" Series 2 (91.4cm)	1.0" (2.5 cm) to 4.25" (10.8 cm) in 0.25" (0.64 cm) increments.	456 lbs.	47.0 in (119.4 cm)	78.0 in. (198.1 cm)	43.0 in. (109.2 cm)
MGS481CKA48300	Kawasaki® FS481V V-Twin [engine speed 3,600 rpm]	3 Blades at 16.25" [0.20"-thick (5.1 mm) alloy steel]	48" UltraCut™ Series 3 (121.9cm)	1.0" (2.5 cm) to 4.25" (10.8 cm) in 0.25" (0.64 cm) increments.	506 lbs.	57.9 in. (147.1 cm)	78.0 in. (198.1 cm)	43.0 in. (109.2 cm)

DECK / FRAME / BLADE

DECK CONSTRUCTION–10-gauge top that is formed and continuously seam welded, 7-gauge side skirt and 7-gauge welded spindle mounting locations for improved strength.

DECK STYLE–Fixed deck, side-discharge standard, with molded discharge chute and option to bag or mulch.

DECK LIFT–Manual cutter housing and front caster spacer position adjustment.

BLADE SPINDLES–No maintenance, sealed and non-greasable spindles; 5.40"-diameter cutter housing and 1.0" diameter spindle tube.

BLADE-TIP SPEED–Approximately 18,500 fpm.

EQUIPMENT

AIR FILTER–Standard engine manufacturer's air filter.

STEERING & MOTION CONTROL–Enhanced Control System (ECS).

Pistol grip on MGS481GKA322P0.

TURNING RADIUS–Zero-turn around center of inside tire.

CASTERS–0.38"-thick caster yoke arm.

FRONT CASTER TIRES–9"x3.5–4", smooth-tread, semi-pneumatic.

DRIVE TIRES–13"x6.5–8", 4-ply.

13"x5.0–6", 4-ply on MGS481GKA322P0.

PARKING BRAKE–Standard; brake bands.

SAFETY PACKAGE–Operator Presence Controls (OPC).

POWER COMPONENTS

DRIVE SYSTEM–Direct drive from transmission to double-belt wheel drives. Direct drive from transmission to single-belt on MGS481GKA322P0.

TRANSMISSION–Belt-Drive.

SPEED CONTROL–Padded shift lever.

SPEED–Up to 6.2 mph (10.0 kph) forward, reverse assist.

PTO ENGAGEMENT–Lever-actuated blade engagement with blade brake.

FUEL CAPACITY–5-gallon (18.9-L) fuel tank.

ELECTRICAL SYSTEM–No battery, recoil start.

WALK-BEHIND MOWER SPECIFICATIONS / DENOTES PROPANE MODEL

VIKING™								
Model	Engine	Blades	Cutting Width	Cutting Heights	Weight	Width	Length	Height
VHS481GKA36200	Kawasaki® FS481V V-Twin [engine speed 3,600 rpm]	2 Blades at 18.00" [0.20"-thick (5.1 mm) alloy steel]	36" Series 2 (91.4cm)	1.0" (2.5 cm) to 4.25" (10.8 cm) in 0.25" (0.64 cm) increments.	481 lbs.	47.0 in. (119.4 cm)	78.0 in. (198.1 cm)	43.2 in. (109.7 cm)
VHS481GKA48300	Kawasaki® FS481V V-Twin [engine speed 3,600 rpm]	3 Blades at 16.25" [0.20"-thick (5.1 mm) alloy steel]	48" UltraCut™ Series 3 (121.9cm)	1.0" (2.5 cm) to 4.25" (10.8 cm) in 0.25" (0.64 cm) increments.	531 lbs.	57.9 in. (147.1 cm)	78.0 in. (198.1 cm)	43.2 in. (109.7 cm)

DECK / FRAME / BLADE

DECK CONSTRUCTION–10-gauge top that is formed and continuously seam welded, 7-gauge side skirt and 7-gauge welded spindle mounting locations for improved strength.

DECK STYLE–Fixed deck, side-discharge standard, with molded discharge chute and option to bag or mulch.

DECK LIFT–Manual lift with hairpin from hole to hole for position adjustment.

BLADE SPINDLES–No maintenance, sealed and non-greasable spindles; 5.40"-diameter cutter housing and 1.0" diameter spindle tube.

BLADE-TIP SPEED–Approximately 18,500 fpm.

EQUIPMENT

AIR FILTER–Standard engine manufacturer's air filter.

STEERING & MOTION CONTROL–Hydro drive with Enhanced Control System (ECS).

TURNING RADIUS–Zero-turn around center of inside tire.

CASTERS–0.38"-thick caster yoke arm.

FRONT CASTER TIRES–9"x3.5–4", smooth-tread, semi-pneumatic.

DRIVE TIRES–13"x6.5–8", 4-ply.

PARKING BRAKE–Lever-actuated mechanical compression.

SAFETY PACKAGE–Operator Presence Controls (OPC).

POWER COMPONENTS

DRIVE SYSTEM–Twin Hydro-Gear variable-displacement pumps and twin high-efficiency Parker/Ross wheel-drive motors with 1.0" (2.54 cm) tapered shafts.

TRANSMISSION–Hydro-Drive.

SPEED CONTROL–Padded shift lever.

SPEED–Up to 6.2 mph (10 kmph) forward, and up to 2.2 mph (3.5 kmph) reverse.

PTO ENGAGEMENT–Mechanical blade engagement with blade brake.

FUEL CAPACITY–5-gallon (18.9-L) fuel tank.

ELECTRICAL SYSTEM–No battery, recoil start.

TURF TRACER® S-SERIES								
Model	Engine	Blades	Cutting Width	Cutting Heights	Weight	Width	Length	Height
TTS481CKA36300	Kawasaki® FS481V V-Twin [engine speed 3,600 rpm]	2 Blades at 18.00" [0.20"-thick (5.1 mm) alloy steel]	36" UltraCut™ Series 3 (91.4 cm)	1.5" (3.8 cm) to 4.5" (11.4 cm) in 0.5" (1.3 cm) increments.	573 lbs.	47.5 in. (120.7 cm)	77.7 in. (197.4 cm)	42.0 in. (106.7 cm)
TTS481GKA48300	Kawasaki® FS481V V-Twin [engine speed 3,600 rpm]	3 Blades at 16.25" [0.20"-thick (5.1 mm) alloy steel]	48" UltraCut™ Series 3 (121.9 cm)	1.5" (3.8 cm) to 4.5" (11.4 cm) in 0.5" (1.3 cm) increments.	586 lbs.	59.5 in (151.1 cm)	73.7 in. (187.2 cm)	42.0 in. (106.7 cm)
TTS600GKA483E0	Kawasaki® FS600V V-Twin [engine speed 3,600 rpm]	3 Blades at 16.25" [0.20"-thick (5.1 mm) alloy steel]	48" UltraCut™ Series 3 (121.9 cm)	1.5" (3.8 cm) to 4.5" (11.4 cm) in 0.5" (1.3 cm) increments.	606 lbs.	59.5 in (151.1 cm)	73.7 in. (187.2 cm)	42.0 in. (106.7 cm)
TTSG80PKC483E0	Kohler® PCV680 Command™ EFI Propane [engine speed 3,600 rpm]	3 Blades at 16.25" [0.20"-thick (5.1 mm) alloy steel]	48" UltraCut™ Series 3 (121.9 cm)	1.5" (3.8 cm) to 4.5" (11.4 cm) in 0.5" (1.3 cm) increments.	741 lbs.	59.5 in (151.1 cm)	73.7 in. (187.2 cm)	42.0 in. (106.7 cm)
TTS541GKA52300	Kawasaki® FS541V V-Twin [engine speed 3,600 rpm]	3 Blades at 18.00" [0.20"-thick (5.1 mm) alloy steel]	52" UltraCut™ Series 3 (132 cm)	1.5" (3.8 cm) to 4.5" (11.4 cm) in 0.5" (1.3 cm) increments.	670 lbs.	64.3 in. (163.3 cm)	75.9 in. (192.8 cm)	42.0 in. (106.7 cm)
TTS600GKA523E0	Kawasaki® FS600V V-Twin [engine speed 3,600 rpm]	3 Blades at 18.00" [0.20"-thick (5.1 mm) alloy steel]	52" UltraCut™ Series 3 (132 cm)	1.5" (3.8 cm) to 4.5" (11.4 cm) in 0.5" (1.3 cm) increments.	690 lbs.	64.3 in. (163.3 cm)	75.9 in. (192.8 cm)	42.0 in. (106.7 cm)

DECK / FRAME / BLADE

DECK CONSTRUCTION–10-gauge top that is formed and continuously seam welded, 7-gauge side skirt and 7-gauge welded spindle mounting locations for improved strength.

DECK STYLE–Full-floating, side-discharge standard, with molded discharge chute and option to bag or mulch.

DECK LIFT–Manual lift with hairpin from hole to hole for position adjustment.

BLADE SPINDLES–No maintenance, sealed and non-greasable spindles; 7.75"-diameter cutter housing with 25 mm (.98") diameter spindle shaft and splined blade driver.

BLADE-TIP SPEED–Approximately 18,500 fpm.

EQUIPMENT

AIR FILTER–Standard engine manufacturer's air filter.

STEERING & MOTION CONTROL–Hydro drive with Enhanced Control System (ECS).

TURNING RADIUS–True zero-turn.

CASTERS–0.38"-thick caster yoke arm.

FRONT CASTER TIRES–9"x3.5–4", smooth-tread, semi-pneumatic.

DRIVE TIRES–16"x6.5–8", 4-ply.

PARKING BRAKE–Lever-actuated mechanical compression.

SAFETY PACKAGE–Operator Presence Controls (OPC).

POWER COMPONENTS

DRIVE SYSTEM–Twin Hydro-Gear variable-displacement pumps and twin high-efficiency Parker/Ross wheel-drive motors with 1.0" (2.54 cm) tapered shafts.

TRANSMISSION–Hydro-Drive.

SPEED–Up to 6.2 mph (10 kmph) forward, and up to 2.2 mph (3.5 kmph) reverse.

PTO ENGAGEMENT–Electromagnetic 105 ft-lb clutch.

Electromagnetic 125 ft-lb clutch on TTSG80PKC483E0.

FUEL CAPACITY–5-gallon (18.9-L) fuel tank.

7.9-gallon propane tank on TTSG80PKC483E0.

ELECTRICAL SYSTEM–No battery, recoil start with 5-amp clutch coil. 12-V battery with 15-amp alternator on TTS600GKA483E0, TTSG80PKC483E0 and TTS600GKA523E0.

TURF TRACER® X-SERIES								
Model	Engine	Blades	Cutting Width	Cutting Heights	Weight	Width	Length	Height
TTX650EKC52400	Kohler® ECV650 Command™ EFI (engine speed 3,600 rpm)	3 Blades at 18.00" [0.20"-thick (5.1 mm) alloy steel]	52" UltraCut™ Series 4 (132 cm)	1.5" (3.8 cm) to 4.5" (11.4 cm) in 0.5" (1.3 cm) increments.	720 lbs.	64.8 in. (164.6 cm)	84.8 in. (215.4 cm)	45.0 in. (114.3 cm)
TTX680PKC52400	Kohler® PCV680 Command™ EFI Propane (engine speed 3,600 rpm)	3 Blades at 18.00" [0.20"-thick (5.1 mm) alloy steel]	52" UltraCut™ Series 4 (132 cm)	1.5" (3.8 cm) to 4.5" (11.4 cm) in 0.5" (1.3 cm) increments.	740 lbs.	64.0 in. (162.6 cm)	84.8 in. (215.4 cm)	45.0 in. (114.3 cm)
TTX650EKC60400	Kohler® ECV650 Command™ EFI (engine speed 3,600 rpm)	3 Blades at 20.5" [0.20"-thick (5.1 mm) alloy steel]	60" UltraCut™ Series 4 (152 cm)	1.5" (3.8 cm) to 4.5" (11.4 cm) in 0.5" (1.3 cm) increments.	760 lbs.	73.0 in. (185.4 cm)	84.8 in. (215.4 cm)	45.0 in. (114.3 cm)
TTX650EKC604N0	Kohler® ECV650 Command™ EFI (engine speed 3,600 rpm)	3 Blades at 20.5" [0.20"-thick (5.1 mm) alloy steel]	60" UltraCut™ Series 4 (152 cm)	1.5" (3.8 cm) to 4.5" (11.4 cm) in 0.5" (1.3 cm) increments.	840 lbs.	72.0 in. (182.96 cm)	104.8 in. (266.2 cm)	45.0 in. (114.3 cm)
TTX680PKC60400	Kohler® PCV680 Command™ EFI Propane (engine speed 3,600 rpm)	3 Blades at 20.5" [0.20"-thick (5.1 mm) alloy steel]	60" UltraCut™ Series 4 (152 cm)	1.5" (3.8 cm) to 4.5" (11.4 cm) in 0.5" (1.3 cm) increments.	780 lbs.	72.0 in. (182.96 cm)	84.8 in. (215.4 cm)	45.0 in. (114.3 cm)
TTX691CKA60400	Kawasaki® FX691V V-Twin (engine speed 3,600 rpm)	3 Blades at 20.5" [0.20"-thick (5.1 mm) alloy steel]	60" UltraCut™ Series 4 (152 cm)	1.5" (3.8 cm) to 4.5" (11.4 cm) in 0.5" (1.3 cm) increments.	760 lbs.	72.0 in. (182.96 cm)	84.8 in. (215.4 cm)	45.0 in. (114.3 cm)

STAND-ON MOWER SPECIFICATIONS / DENOTES PROPANE MODEL

VANTAGE® S-SERIES								
Model	Engine	Blades	Cutting Width	Cutting Heights	Weight	Width	Length	Height
VTS541CKA36300	Kawasaki® FS541V V-Twin (engine speed 3,600 rpm)	2 Blades at 18.00" (0.20"-thick (5.1 mm) alloy steel)	36" UltraCut™ Series 3 (91.4cm)	1.0" (2.54 cm) to 5.0" (12.7 cm) in 0.25" (.64 cm) increments.	790 lbs.	48.0 in. (121.9 cm)	74 in. (188 cm)	50 in. (127 cm)
VTS691CKA48400	Kawasaki® FX691V V-Twin (engine speed 3,600 rpm)	3 Blades at 16.25" (0.20"-thick (5.1 mm) alloy steel)	48" UltraCut™ Series 4 (122 cm)	1.0" (2.54 cm) to 5.0" (12.7 cm) in 0.25" (.64 cm) increments.	855 lbs.	59.6 in. (151.4 cm)	74 in. (188 cm)	50 in. (127 cm)
VTS691CKA52400	Kawasaki® FX691V V-Twin (engine speed 3,600 rpm)	3 Blades at 18.00" (0.20"-thick (5.1 mm) alloy steel)	52" UltraCut™ Series 4 (132 cm)	1.0" (2.54 cm) to 5.0" (12.7 cm) in 0.25" (.64 cm) increments.	866 lbs.	64.8 in. (164.6 cm)	74 in. (188 cm)	50 in. (127 cm)
VTS730EKC52400	Kohler® ECV730 Command™ EFI (engine speed 3,600 rpm)	3 Blades at 18.00" (0.20"-thick (5.1 mm) alloy steel)	52" UltraCut™ Series 4 (132 cm)	1.0" (2.54 cm) to 5.0" (12.7 cm) in 0.25" (.64 cm) increments.	866 lbs.	64.8 in. (164.6 cm)	74 in. (188 cm)	50 in. (127 cm)
VTS740PKC52400	Kohler® PCV740 Command™ EFI Propane (engine speed 3,600 rpm)	3 Blades at 18.00" (0.20"-thick (5.1 mm) alloy steel)	52" UltraCut™ Series 4 (132 cm)	1.0" (2.54 cm) to 5.0" (12.7 cm) in 0.25" (.64 cm) increments.	885 lbs.	64.8 in. (164.6 cm)	74 in. (188 cm)	51 in. (127 cm)
VTS740EKC60400	Kohler® ECV740 Command™ EFI (engine speed 3,600 rpm)	3 Blades at 20.5" (0.20"-thick (5.1 mm) alloy steel)	60" UltraCut™ Series 4 (152 cm)	1.0" (2.54 cm) to 5.0" (12.7 cm) in 0.25" (.64 cm) increments.	883 lbs.	72.8 in. (184.9 cm)	74 in. (188 cm)	50 in. (127 cm)
VTS740PKC60400	Kohler® PCV740 Command™ EFI Propane (engine speed 3,600 rpm)	3 Blades at 20.5" (0.20"-thick (5.1 mm) alloy steel)	60" UltraCut™ Series 4 (152 cm)	1.0" (2.54 cm) to 5.0" (12.7 cm) in 0.25" (.64 cm) increments.	893 lbs.	72.8 in. (184.9 cm)	74 in. (188 cm)	50 in. (127 cm)

DECK / FRAME / BLADE

DECK CONSTRUCTION—10-gauge top that is formed and continuously seam welded, 7-gauge side skirt and 7-gauge formed and welded spindle mounting locations for improved strength and reduced weight.

DECK STYLE—Full-floating, side-discharge standard, with molded discharge chute and option to bag or mulch.

DECK LIFT—Standard; mechanical lift-assist springs.

TRACTOR FRAME—Welded, heavy duty 1.5"x3" tubular steel.

BLADE SPINDLES—No maintenance, sealed and non-greasable spindles; 7.75" diameter cutter housing with 1.75" diameter splined blade driver 1.0" diameter spindle shaft.

BLADE-TIP SPEED—Approximately 18,500 fpm.

EQUIPMENT

AIR FILTER—Standard engine manufacturer's air filter.

Heavy duty canister air filtration system on VTS740PKC52400, VTS740EKC60400 and VTS740PKC60400.

STEERING & MOTION CONTROL—Twin levers with no-tools adjustable front reference bar to modify forward ground speed.

Hydro drive with Enhanced Control System (ECS) on VTS740PKC60400.

TURNING RADIUS—True zero-turn.

CASTERS—0.38"-thick double-yoke, smooth tread caster wheel assembly with pre-installed bearing cups.

FRONT CASTER TIRES—11"x4.0-5", smooth tread, semi-pneumatic.

DRIVE TIRES—18"x8.5-8" Kenda® on VTS541CKA36300.

20"x10-8" Kenda® on all other models.

PARKING BRAKE—Lever-actuated bar brake.

SAFETY PACKAGE—Operator Presence Controls (OPC).

POWER COMPONENTS

DRIVE SYSTEM—Two Hydro-Gear 10cc pumps powering two Parker 12 cubic inch motors.

Two Hydro-Gear 12cc pumps powering two Parker 14 cubic inch motors on VTS740PKC52400 and VTS740PKC60400.

TRANSMISSION—Hydro-Drive.

SPEED—Up to 8.0 mph (12.9 kmph) forward, and up to 4.0 mph (6.4 kmph) reverse.

PTO ENGAGEMENT—Warner 175 ft-lb clutch on VTS541CKA36300.

Warner 200 ft-lb clutch on all other models.

FUEL CAPACITY—8-gallon (30.3L), single fuel tank with single fill location.

7.9-gallon propane tank on VTS740PKC52400.

ELECTRICAL SYSTEM—12-V battery with 15-amp alternator.

12-V battery with 20-amp alternator on VTS740PKC52400, VTS740EKC60400 and VTS740PKC60400.

VANTAGE® X-SERIES								
Model	Engine	Blades	Cutting Width	Cutting Heights	Weight	Width	Length	Height
VTX651GKA48400	Kawasaki® FS651V V-Twin (engine speed 3,600 rpm)	3 Blades at 16.25" (0.20"-thick (5.1 mm) alloy steel)	48" UltraCut™ Series 4 (122 cm)	1.0" (2.54 cm) to 5.0" (12.7 cm) in 0.25" (.64 cm) increments.	855 lbs.	59.6 in. (151.4 cm)	74 in. (188 cm)	50 in. (127 cm)
VTX730EKC52400	Kohler® ECV730 Command™ EFI (engine speed 3,600 rpm)	3 Blades at 18.00" (0.20"-thick (5.1 mm) alloy steel)	52" UltraCut™ Series 4 (132 cm)	1.0" (2.54 cm) to 5.0" (12.7 cm) in 0.25" (.64 cm) increments.	875 lbs.	64.8 in. (164.6 cm)	74 in. (188 cm)	50 in. (127 cm)
VTX740EKC60400	Kohler® ECV740 Command™ EFI (engine speed 3,600 rpm)	3 Blades at 20.5" (0.20"-thick (5.1 mm) alloy steel)	60" UltraCut™ Series 4 (152 cm)	1.0" (2.54 cm) to 5.0" (12.7 cm) in 0.25" (.64 cm) increments.	883 lbs.	72.8 in. (184.9 cm)	74 in. (188 cm)	50 in. (127 cm)

DECK / FRAME / BLADE

DECK CONSTRUCTION—10-gauge top that is formed and continuously seam welded, 7-gauge side skirt and 7-gauge formed and welded spindle mounting locations for improved strength and reduced weight.

DECK STYLE—Full-floating, side-discharge standard, with molded discharge chute and option to bag or mulch.

DECK LIFT—Standard; mechanical lift-assist springs.

TRACTOR FRAME—Welded, heavy duty 1.5"x3" tubular steel.

BLADE SPINDLES—No maintenance, sealed and non-greasable spindles; 7.75" diameter cutter housing with 1.75" diameter splined blade driver 1.0" diameter spindle shaft.

BLADE-TIP SPEED—Approximately 18,500 fpm.

EQUIPMENT

AIR FILTER—Heavy duty canister air filtration system.

STEERING & MOTION CONTROL—Hydro drive with Enhanced Control System (ECS).

TURNING RADIUS—True zero-turn.

CASTERS—0.38"-thick double-yoke, smooth tread caster wheel assembly with pre-installed bearing cups.

FRONT CASTER TIRES—11"x4.0-5", smooth tread, semi-pneumatic.

DRIVE TIRES—20"x10-8" Kenda®.

PARKING BRAKE—Lever-actuated bar brake.

SAFETY PACKAGE—Operator Presence Controls (OPC).

POWER COMPONENTS

DRIVE SYSTEM—Two Hydro-Gear 12cc pumps powering two Parker 14 cubic inch motors.

Two Hydro-Gear 10cc pumps powering two Parker 12 cubic inch motors on VTX651GKA48400.

TRANSMISSION—Hydro-Drive.

SPEED—Up to 8.0 mph (12.9 kmph) forward, and up to 4.0 mph (6.4 kmph) reverse.

PTO ENGAGEMENT—Warner 200 ft-lb clutch.

FUEL CAPACITY—8-gallon (30.3L), single fuel tank with single fill location.

ELECTRICAL SYSTEM—12-V battery, 20-amp alternator.

12-V battery, 15-amp alternator on VTX651GKA48400.

RIDING MOWER SPECIFICATIONS

QUEST® E-SERIES								
Model	Engine	Blades	Cutting Width	Cutting Heights	Weight	Width	Length	Height
QTE452CEM42100	Exmark® 452 (engine speed 3,300 rpm)	2 Blades at 21.60" (0.20"-thick (5.1 mm) alloy steel)	42" Series 1 (86.4 cm)	1.5" (3.8 cm) to 4.5" (11.4 cm) in 0.5" (1.3 cm) increments.	555 lbs.	53.8 in. (116.7 cm)	71.8 in. (182.4 cm)	40.7 in. (103.4 cm)
QTE452CEM42200	Exmark® 452 (engine speed 3,300 rpm)	2 Blades at 21.60" (0.20"-thick (5.1 mm) alloy steel)	42" Series 2 (106.7 cm)	1.5" (3.8 cm) to 4.5" (11.4 cm) in 0.5" (1.3 cm) increments.	555 lbs.	54.1 in. (137.4 cm)	71.8 in. (182.4 cm)	40.7 in. (103.4 cm)
QTE708GEM50200	Exmark® 708 (engine speed 3,300 rpm)	3 Blades at 17.5" (0.20"-thick (5.1 mm) alloy steel)	50" Series 2 (127.0 cm)	1.5" (3.8 cm) to 4.5" (11.4 cm) in 0.5" (1.3 cm) increments.	681 lbs.	61.7 in. (156.7 cm)	72.9 in. (185.2 cm)	42.9 in. (109.0 cm)

DECK / FRAME / BLADE

DECK CONSTRUCTION—10-gauge top that is formed and welded, 12-gauge side skirt and 7-gauge welded bumper.

DECK STYLE—Full-floating, fabricated and welded steel deck.

Side-discharge standard with the option to bag or mulch.

Full-floating, stamped steel deck. Side-discharge standard with the option to bag or mulch on QTE452CEM42100.

DECK LIFT—Standard; lever lift.

TRACTOR FRAME—Unibody, riveted 10-gauge steel.

BLADE SPINDLES—No maintenance, sealed and non-greasable spindles; 5.50" diameter cutter housing with 0.67" diameter spindle shaft.

BLADE-TIP SPEED—Approximately 18,500 fpm.

EQUIPMENT

AIR FILTER—Standard engine manufacturer's air filter.

STEERING & MOTION CONTROL—Hydraulically dampened twin levers, adjustable both fore and aft. Levers are adjustable to 2 height positions.

TURNING RADIUS—True zero-turn.

CASTERS—0.25"-thick caster yoke arms.

FRONT CASTER TIRES—11"x4.0-5" ribbed tread, pneumatic.

13"x5-6" ribbed tread, pneumatic on QTE708GEM50200.

DRIVE TIRES—18"x7.5-8", 4-ply Turf Tech TL.

18"x9.5-8", on QTE708GEM50200.

SEAT—High-back, hinged mounting, spring suspension.

PARKING BRAKE—Automatic-actuated pawl brake.

SAFETY PACKAGE—Operator Presence Controls (OPC) and drive system interlock.

POWER COMPONENTS

DRIVE SYSTEM—Two Hydro-Gear ZT2100 hydro static transmissions with no hoses, integrated cooling fans, integrated reservoir.

Two Hydro-Gear ZT2200 hydrostatic transmission with no hoses, integrated cooling fans, integrated reservoir on QTE708GEM50200.

TRANSMISSION—Hydro-Drive.

SPEED—Up to 7.0 mph (11.3 kmph) forward, and up to 3.4 mph (5.5 kmph) reverse.

PTO ENGAGEMENT—MagStop electromagnetic 80 ft-lb clutch.

MagStop electromagnetic 105 ft-lb clutch on QTE708GEM50200.

FUEL CAPACITY—High-capacity, 2.9-gallon (11.0-L), single fuel tank with single fill location.

ELECTRICAL SYSTEM—12-V battery, 15-amp alternator.

QUEST® S-SERIES								
Model	Engine	Blades	Cutting Width	Cutting Heights	Weight	Width	Length	Height
QTS452CEM34200	Exmark® 452 (engine speed 3,300 rpm)	2 Blades at 17.5" (0.20"-thick (5.1 mm) alloy steel)	34" Series 2 (86.4 cm)	1.5" (3.8 cm) to 4.5" (11.4 cm) in 0.5" (1.3 cm) increments.	521 lbs.	45.6 in. (115.8 cm)	74.7 in. (207.5 cm)	45.4 in. (189.7 cm)
QTS708GEM42200	Exmark® 708 V-Twin (engine speed 3,300 rpm)	2 Blades at 21.60" (0.20"-thick (5.1 mm) alloy steel)	42" Series 2 (106.7 cm)	1.5" (3.8 cm) to 4.5" (11.4 cm) in 0.5" (1.3 cm) increments.	561 lbs.	54.1 in. (137.4 cm)	71.8 in. (182.4 cm)	40.7 in. (103.4 cm)
QTS708GEM50200	Exmark® 708 V-Twin (engine speed 3,300 rpm)	3 Blades at 17.5" (0.20"-thick (5.1 mm) alloy steel)	50" Series 2 (127.0 cm)	1.5" (3.8 cm) to 4.5" (11.4 cm) in 0.5" (1.3 cm) increments.	681 lbs.	61.7 in. (156.7 cm)	72.9 in. (185.2 cm)	42.9 in. (109.0 cm)

DECK / FRAME / BLADE

DECK CONSTRUCTION—10-gauge top that is formed and welded, 12-gauge side skirt and 7-gauge welded bumper.

DECK STYLE—Full-floating, fabricated and welded steel deck.

Side-discharge standard with the option to bag or mulch.

DECK LIFT—Standard; lever lift. Foot-assist lifts the deck to maneuver around obstacles.

TRACTOR FRAME—Unibody, riveted 10-gauge steel.

BLADE SPINDLES—No maintenance, sealed and non-greasable spindles; 5.50" diameter cutter housing with 0.67" diameter spindle shaft.

BLADE-TIP SPEED—Approximately 18,500 fpm.

EQUIPMENT

AIR FILTER—Standard engine manufacturer's air filter.

STEERING & MOTION CONTROL—Hydraulically dampened twin levers, adjustable both fore and aft. Levers are adjustable to 2 height positions.

TURNING RADIUS—True zero-turn.

CASTERS—0.25"-thick caster yoke arms.

FRONT CASTER TIRES—11"x4.0-5", ribbed tread, pneumatic.

13"x5-6" ribbed tread, pneumatic on QTS708GEM50200.

DRIVE TIRES—18"x6-8", 4-ply Turf Tech TL on QTS452CEM34200.

18"x7.5-8", 4-ply Turf Tech TL on QTS708GEM42200.

20"x8.0-10", 4-ply Super Turf on QTS708GEM50200.

SEAT—Commercial-grade, high-back contoured foam padded with armrests. Hinged mounting, spring suspension.

PARKING BRAKE—Automatic-actuated pawl brake.

SAFETY PACKAGE—Operator Presence Controls (OPC).

POWER COMPONENTS

DRIVE SYSTEM—Two Hydro-Gear ZT2200 hydro static transmissions with no hoses, integrated cooling fans, integrated reservoir.

Two Hydro-Gear ZT2800 hydrostatic transmission with charge pumps, no hoses, integrated cooling fans, remote reservoir, spin-on filter and heavy duty components on QTS708GEM50200.

TRANSMISSION—Hydro-Drive.

SPEED—Up to 7.0 mph (11.3 kmph) forward, and up to 3.4 mph (5.5 kmph) reverse.

PTO ENGAGEMENT—MagStop electromagnetic 80 ft-lb clutch.

MagStop electromagnetic 105 ft-lb clutch on QTS708GEM50200.

FUEL CAPACITY—High-capacity, 2.9-gallon (11.0-L), single fuel tank with single fill location.

ELECTRICAL SYSTEM—12-V battery, 15-amp alternator.

QUEST® S-SERIES FRONT STEER								
Model	Engine	Blades	Cutting Width	Cutting Heights	Weight	Width	Length	Height
QSS708GEM42200	Exmark® 708 V-Twin (engine speed 3,300 rpm)	2 Blades at 21.60" (0.20"-thick (5.1 mm) alloy steel)	42" Series 2 (106.7cm)	1.5" (3.8 cm) to 4.5" (11.4 cm) in 0.5" (1.3 cm) increments.	561 lbs.	54.1 in. (137.4 cm)	81.7 in. (207.5 cm)	40.7 in. (103.4 cm)
QSS708GEM50200	Exmark® 708 V-Twin (engine speed 3,300 rpm)	3 Blades at 17.5" (0.20"-thick (5.1 mm) alloy steel)	50" Series 2 (127.0 cm)	1.5" (3.8 cm) to 4.5" (11.4 cm) in 0.5" (1.3 cm) increments.	681 lbs.	61.7 in. (156.7 cm)	81.7 in. (207.5 cm)	42.9 in. (109.0 cm)

DECK / FRAME / BLADE

DECK CONSTRUCTION—10-gauge top that is formed and welded, 12-gauge side skirt and 7-gauge welded bumper.

DECK STYLE—Full-floating, fabricated and welded steel deck.

Side-discharge standard with the option to bag or mulch.

DECK LIFT—Standard; lever lift. Foot-assist lifts the deck to maneuver around obstacles.

TRACTOR FRAME—Unibody, riveted 10-gauge steel.

BLADE SPINDLES—No maintenance, sealed and non-greasable spindles; 5.50" diameter cutter housing with 0.67" diameter spindle shaft.

BLADE-TIP SPEED—Approximately 18,500 fpm.

EQUIPMENT

AIR FILTER—Standard engine manufacturer's air filter.

STEERING & MOTION CONTROL—Steering wheel controls direction of front casters and independent hydraulic transaxles in a turn for maximum control. Steering column is adjustable to operator preference.

TURNING RADIUS—True zero-turn.

CASTERS—0.25"-thick caster yoke arms.

FRONT CASTER TIRES—11"x4.0-5", ribbed tread, pneumatic on QSS708GEM42200.

13"x5-6" ribbed tread, pneumatic on QSS708GEM50200.

DRIVE TIRES—18"x7.5-8", 4-ply Turf Tech TL on QSS708GEM42200.

20"x8.0-10", 4-ply Super Turf on QSS708GEM50200.

SEATT—Commercial-grade, high-back contoured foam padded with armrests. Hinged mounting, spring suspension.

PARKING BRAKE—Automatic-actuated pawl brake.

SAFETY PACKAGE—Operator Presence Controls (OPC).

POWER COMPONENTS

DRIVE SYSTEM—Two Hydro-Gear ZT2200 hydro static transmissions with no hoses, integrated cooling fans, integrated reservoir on QSS708GEM42200.

Two Hydro-Gear ZT2800 hydrostatic transmission with charge pumps, no hoses, integrated cooling fans, remote reservoir, spin-on filter and heavy-duty components on QSS708GEM50200.

TRANSMISSION—Hydro-Drive.

SPEED—Up to 7.0 mph (11.3 kmph) forward, and up to 3.4 mph (5.5 kmph) reverse.

PTO ENGAGEMENT—MagStop electromagnetic 80 ft-lbs clutch on QSS708GEM42200.

MagStop electromagnetic 105 ft-lbs clutch on QSS708GEM50200.

FUEL CAPACITY—High-capacity, 2.9-gallon (11.0-L), single fuel tank with single fill location.

ELECTRICAL SYSTEM—12-V battery, 15-amp alternator.

RIDING MOWER SPECIFICATIONS

PIONEER E-SERIES								
Model	Engine	Blades	Cutting Width	Cutting Heights	Weight	Width	Length	Height
PNE651GKA48200	Kawasaki® FR651V V-Twin (engine speed 3,600 rpm)	3 Blades at 16.25" (0.20"-thick (5.1 mm) alloy steel)	48" UltraCut™ Series 2 (121.9 cm)	1.5" (3.8 cm) to 5.0" (12.7 cm) in 0.25" (0.6 cm) increments.	800 lbs.	60 in. (152.4 cm)	78 in. (198.1 cm)	71 in. (180.3 cm)
PNE691GKA52200	Kawasaki® FR691V V-Twin (engine speed 3,600 rpm)	3 Blades at 18.00" (0.20"-thick (5.1 mm) alloy steel)	52" UltraCut™ Series 2 (132.1 cm)	1.5" (3.8 cm) to 5.0" (12.7 cm) in 0.25" (0.6 cm) increments.	810 lbs.	64 in (162.6 cm)	78 in. (198.1 cm)	71 in. (180.3 cm)

DECK / FRAME / BLADE

DECK CONSTRUCTION—10-gauge top that is formed and welded with reinforcement/guard on leading edge.

DECK STYLE—Full-floating, side-discharge standard, with molded discharge chute and option to bag or mulch.

DECK LIFT—Standard; foot-controlled deck lift changes cutting height and lifts the deck to maneuver around obstacles, or place in transport position.

TRACTOR FRAME—Unibody, welded, heavy duty 2" square tublar steel.

BLADE SPINDLES—No maintenance, sealed and non-greasable spindles; spindles; 7.50"-diameter cutter housing contains 17 mm (0.67") diameter spindle shaft and hex blade drive.

BLADE-TIP SPEED—Approximately 18,500 fpm.

EQUIPMENT

AIR FILTER—Standard engine manufacturer's air filter.

STEERING & MOTION CONTROL—Hydraulically dampened twin levers, adjustable both fore and aft. Levers are adjustable to 3 height positions.

TURNING RADIUS—True zero-turn.

CASTERS—0.38"-thick caster yoke arms.

FRONT CASTER TIRES—13"x5.0-6", smooth tread, pneumatic.

DRIVE TIRES—20"x8.0-10" Super Turf.

SEAT—Commercial-grade, high-back contoured foam padded with armrests. Hinged mounting, spring suspension.

PARKING BRAKE—Lever-actuated pawl brake.

SAFETY PACKAGE—Operator Presence Controls (OPC) and drive system interlock, with safety interlock system indicators.

ROPS—2-post foldable ROPS standard with seat belt and latch.

POWER COMPONENTS

DRIVE SYSTEM—Two Hydro-Gear ZT800 hydrostatic transmission with charge pumps, no hoses, integrated cooling fans, remote reservoir, spin-on filter and heavy-duty components.

TRANSMISSION—Hydro-Drive.

SPEED—Up to 7.0 mph (11.3 kmph) forward, and up to 4.0 mph (6.4 kmph) reverse.

PTO ENGAGEMENT—MagStop electromagnetic 175 ft-lbs clutch.

FUEL CAPACITY—7-gallon (26.5-L) single fuel tank with single fill location.

ELECTRICAL SYSTEM—12-V battery, 15-amp alternator.

PIONEER S-SERIES								
Model	Engine	Blades	Cutting Width	Cutting Heights	Weight	Width	Length	Height
PNS710GKC48300	Kohler® ZT710 Confidant™ (engine speed 3,700 rpm)	3 Blades at 16.25" (0.20"-thick (5.1 mm) alloy steel)	48" UltraCut™ Series 3 (121.9 cm)	1.5" (3.8 cm) to 5.0" (12.7 cm) in 0.25" (.64 cm) increments.	862 lbs.	60.0 in. (152.4 cm)	78 in. (198.1 cm)	72 in. (182.9 cm)
PNS720GKC52300	Kohler® ZT720 Confidant™ (engine speed 3,700 rpm)	3 Blades at 18.00" (0.20"-thick (5.1 mm) alloy steel)	52" UltraCut™ Series 3 (132.1 cm)	1.5" (3.8 cm) to 5.0" (12.7 cm) in 0.25" (.64 cm) increments.	868 lbs.	65.0 in. (165.1 cm)	78 in. (198.1 cm)	72 in. (182.9 cm)
PNS730GKA604A3	Kawasaki® FX730V V-Twin (engine speed 3,700 rpm)	3 Blades at 20.5" (0.20"-thick (5.1 mm) alloy steel)	60" UltraCut™ Series 4 (152.4 cm)	1.5" (3.8 cm) to 5.0" (12.7 cm) in 0.25" (.64 cm) increments.	790 lbs.	73.0 in. (185.4 cm)	79 in. (200.7 cm)	72 in. (182.9 cm)
PNS740GKC60400	Kohler® ZT740 Confidant™ (engine speed 3,700 rpm)	3 Blades at 20.5" (0.20"-thick (5.1 mm) alloy steel)	60" UltraCut™ Series 4 (152.4 cm)	1.5" (3.8 cm) to 5.0" (12.7 cm) in 0.25" (.64 cm) increments.	948 lbs.	73.0 in. (185.4 cm)	79 in. (200.7 cm)	72 in. (182.9 cm)
PNS740GKC604A4	Kohler® ZT740 Confidant™ (engine speed 3,700 rpm)	3 Blades at 20.5" (0.20"-thick (5.1 mm) alloy steel)	60" UltraCut™ Series 4 (152.4 cm)	1.5" (3.8 cm) to 5.0" (12.7 cm) in 0.25" (.64 cm) increments.	948 lbs.	73.0 in. (185.4 cm)	79 in. (200.7 cm)	72 in. (182.9 cm)
PNS740GKC60RA3	Kohler® ZT740 Confidant™ (engine speed 3,700 rpm)	3 Blades at 20.5" (0.20"-thick (5.1 mm) alloy steel)	60" UltraCut™ Rear Discharge (152.4 cm)	1.5" (3.8 cm) to 5.0" (12.7 cm) in 0.25" (.64 cm) increments.	842 lbs.	66.2 in. (168.1 cm)	80.8 in. (205.2 cm)	72 in. (182.9 cm)

DECK / FRAME / BLADE

DECK CONSTRUCTION—10-gauge, high-strength alloy top that is formed and continuously seam welded, with 7-gauge side skirt. 7-gauge, high-strength alloy top that is formed and continuously seam welded, with 7-gauge, high-strength alloy side skirt on PNS740GKC60RA3.

DECK STYLE—Full-floating, side-discharge standard, with molded discharge chute and option to bag or mulch. Full-floating, rear-discharge deck with option to mulch, on PNS740GKC60RA3.

DECK LIFT—Standard; foot-controlled deck lift changes cutting height and lifts the deck to maneuver around obstacles, or place in transport position.

TRACTOR FRAME—Unibody, welded, heavy duty 2" square tublar steel.

BLADE SPINDLES—No maintenance, sealed and non-greasable spindles; 7.75"-diameter cutter housing with 25 mm (0.98") diameter spindle shaft and splined blade driver.

BLADE-TIP SPEED—Approximately 18,500 fpm.

EQUIPMENT

AIR FILTER—Cyclonic Air Cleaner.

Heavy duty canister air filtration system on PNS730GKA604A3.

STEERING & MOTION CONTROL—Hydraulically dampened twin levers, adjustable both fore and aft. Levers are adjustable to 3 height positions.

TURNING RADIUS—True zero-turn.

CASTERS—0.38"-thick caster yoke arms.

0.5"-thick caster yoke arms on PNS730GKA604A3

and PNS740GKC60RA3.

FRONT CASTER TIRES—13"x5.0-6", smooth tread, pneumatic.

13"x6.5-6", smooth tread, pneumatic on PNS730GKA604A3

and PNS740GKC60RA3.

DRIVE TIRES—23"x10.5-12" Super Turf.

22"x9.5-12" Super Turf on PNS730GKA604A3

and PNS740GKC60RA3.

SEAT—Commercial-grade, high-back contoured foam padded with armrests. Hinged mounting, spring suspension.

Deluxe, two-tone, bolstered suspension seat with Elastomeric Vibration Control material. Hinged mounting on PNS730GKA604A3,

PNS740GKC604A4 and PNS740GKC60RA3.

PARKING BRAKE—Lever-actuated pawl brake.

SAFETY PACKAGE—Operator Presence Controls (OPC) and drive system interlock, with safety interlock system indicators.

ROPS—2-post foldable ROPS standard with seat belt and latch.

POWER COMPONENTS

DRIVE SYSTEM—Dual Hydro-Gear ZT3400, hydrostatic transmission with charge pumps, relief valves and independent, replaceable filters. Two Hydro-Gear ZT3100 hydrostatic transmission with charge pumps, no hoses, integrated cooling fans, remote reservoir, spin-on filter and heavy duty components on PNS710GKC48300 and PNS720GKC52300.

TRANSMISSION—Hydro-Drive.

SPEED—Up to 9.0 mph (14.5 kmph) forward, and up to 6.0 mph (9.7 kmph) reverse.

Up to 8.0 mph (12.9 kmph) forward, and up to 5.0 mph (8.1 kmph) reverse on PNS710GKC48300 and PNS720GKC52300.

PTO ENGAGEMENT—MagStop electromagnetic 200 ft-lb clutch.

MagStop electromagnetic 175 ft-lb clutch on on PNS710GKC48300

and PNS720GKC52300.

FUEL CAPACITY—7-gallon (26.5-L) single fuel tank.

7-gallon (26.5-L) single fuel tank with single fill location on

PNS710GKC48300 and PNS720GKC52300.

ELECTRICAL SYSTEM—12-V battery, 15-amp alternator.

RIDING MOWER SPECIFICATIONS

LAZER Z® E-SERIES								
Model	Engine	Blades	Cutting Width	Cutting Heights	Weight	Width	Length	Height
LZE651GKA484A2	Kawasaki® FX651V V-Twin (engine speed 3,750 rpm)	3 Blades at 16.25" (0.20"-thick (5.1 mm) alloy steel)	48" UltraCut™ Series 4 (121.9 cm)	1.0" (2.5 cm) to 5.5" (11.8 cm) in 0.25" (0.64 cm) increments.	1055 lbs.	59.6 in. (151.4 cm)	79.2 in. (201.2 cm)	70.0 in. (177.8 cm)
LZE732GKC524A2	Kohler® CV732 Command™ (engine speed 3,750rpm)	3 Blades at 18.00" (0.20"-thick (5.1 mm) alloy steel)	52" UltraCut™ Series 4 (132.1 cm)	1.0" (2.5 cm) to 5.5" (11.8 cm) in 0.25" (0.64 cm) increments.	1076 lbs.	64.8 in. (164.6 cm)	79.2 in. (201.2 cm)	70.0 in. (177.8 cm)
LZE730GKA524B2	Kawasaki® FX730V V-Twin (engine speed 3,750 rpm)	3 Blades at 18.00" (0.20"-thick (5.1 mm) alloy steel)	52" UltraCut™ Series 4 (132.1 cm)	1.0" (2.5 cm) to 5.5" (11.8 cm) in 0.25" (0.64 cm) increments.	1175 lbs.	64.8 in. (164.6 cm)	79.2 in. (201.2 cm)	70.0 in. (177.8 cm)
LZE740EKC60400	Kohler® ECV740 Command™ EFI (engine speed 3,750 rpm)	3 Blades at 20.50" (0.20"-thick (5.1 mm) alloy steel)	60" UltraCut™ Series 4 (152.4 cm)	1.0" (2.5 cm) to 5.5" (11.8 cm) in 0.25" (0.64 cm) increments.	1115 lbs.	72.8 in. (184.9 cm)	83.1 in. (211.1 cm)	70.0 in. (177.8 cm)
LZE742GKC604A3	Kohler® CV742 Command™ (engine speed 3,750 rpm)	3 Blades at 20.50" (0.20"-thick (5.1 mm) alloy steel)	60" UltraCut™ Series 4 (152.4 cm)	1.0" (2.5 cm) to 5.5" (11.8 cm) in 0.25" (0.64 cm) increments.	1147 lbs.	72.8 in. (184.9 cm)	83.1 in. (211.1 cm)	70.0 in. (177.8 cm)
LZE742GKC604B1	Kohler® CV742 Command™ (engine speed 3,750 rpm)	3 Blades at 20.50" (0.20"-thick (5.1 mm) alloy steel)	60" UltraCut™ Series 4 (152.4 cm)	1.0" (2.5 cm) to 5.5" (11.8 cm) in 0.25" (0.64 cm) increments.	1247 lbs.	72.8 in. (184.9 cm)	83.1 in. (211.1 cm)	70.0 in. (177.8 cm)
LZE801GKA604A3	Kawasaki® FX801V V-Twin (engine speed 3,750 rpm)	3 Blades at 20.50" (0.20"-thick (5.1 mm) alloy steel)	60" UltraCut™ Series 4 (152.4 cm)	1.0" (2.5 cm) to 5.5" (11.8 cm) in 0.25" (0.64 cm) increments.	1163 lbs.	72.8 in. (184.9 cm)	83.1 in. (211.1 cm)	70.0 in. (177.8 cm)
LZE801GKA604B1	Kawasaki® FX801V V-Twin (engine speed 3,750 rpm)	3 Blades at 20.50" (0.20"-thick (5.1 mm) alloy steel)	60" UltraCut™ Series 4 (152.4 cm)	1.0" (2.5 cm) to 5.5" (11.8 cm) in 0.25" (0.64 cm) increments.	1250 lbs.	72.8 in. (184.9 cm)	83.1 in. (211.1 cm)	70.0 in. (177.8 cm)
LZE801GKA60RA1	Kawasaki® FX801V V-Twin (engine speed 3,750 rpm)	3 Blades at 20.50" (0.20"-thick (5.1 mm) alloy steel)	60" UltraCut™ Rear Discharge (152.4 cm)	1.0" (2.5 cm) to 5.5" (11.8 cm) in 0.25" (0.64 cm) increments.	1217 lbs.	72.8 in. (184.9 cm)	87.2 in. (221.5 cm)	70.0 in. (177.8 cm)
LZE801GKA724A3	Kawasaki® FX801V V-Twin (engine speed 3,750 rpm)	3 Blades at 24.50" (0.20"-thick (5.1 mm) alloy steel)	72" UltraCut™ Series 4 (182.9 cm)	1.0" (2.5 cm) to 5.5" (11.8 cm) in 0.25" (0.64 cm) increments.	1321 lbs.	84.9 in. (215.6 cm)	86.1 in. (218.7 cm)	70.0 in. (177.8 cm)
LZE801GKA72RA1	Kawasaki® FX801V V-Twin (engine speed 3,750 rpm)	3 Blades at 24.50" (0.20"-thick (5.1 mm) alloy steel)	72" UltraCut™ Rear Discharge (182.9 cm)	1.0" (2.5 cm) to 5.5" (11.8 cm) in 0.25" (0.64 cm) increments.	1304 lbs.	78.2 in. (198.6 cm)	87.2 in. (221.5 cm)	70.0 in. (177.8 cm)

DECK / FRAME / BLADE

DECK CONSTRUCTION—10-gauge top that is formed and continuously seam welded, 7-gauge side skirt and 7-gauge formed and welded spindle mounting locations for improved strength and reduced weight. 10-gauge top that is formed and continuously seam welded with 7-gauge side skirt on LZE651GKA484A2 and LZE732GKA524A2. 7-gauge, high-strength alloy top that is formed and continuously seam welded, with 7-gauge, high-strength alloy side skirt on LZE801GKA72RA1 and LZE801GKA60RA1.

DECK STYLE—Full-floating, side-discharge standard, with molded discharge chute and option to bag or mulch.

Full-floating, rear-discharge deck with option to mulch on LZE801GKA72RA1 and LZE801GKA60RA1.

DECK LIFT—Standard; foot-controlled deck lift changes cutting height and lifts the deck to maneuver around obstacles, or place in transport position.

TRACTOR FRAME—Unibody, welded, heavy duty 1.5"x3" tubular steel.

BLADE SPINDLES—No maintenance, sealed and non-greasable spindles; 7.75"-diameter cutter housing with 25 mm (0.98") diameter spindle shaft and splined blade driver.

BLADE-TIP SPEED—Approximately 18,500 fpm.

EQUIPMENT

AIR FILTER—Heavy duty canister air filtration system.

STEERING & MOTION CONTROL—Hydraulically dampened twin levers, adjustable both fore and aft. Adjustable dampeners (3 positions) to customize drive responsiveness. Also adjustable to 2 height positions.

TURNING RADIUS—True zero-turn.

CASTERS—0.50"-thick caster yoke arm.

FRONT CASTER TIRES—13"x6.5-6", smooth-tread, pneumatic. 13"x5.0-6", smooth-tread, semi-pneumatic on LZE651GKA484A2, LZE732GKA524A2, LZE730GKA524B2 and LZE740EKC60400.

DRIVE TIRES—24"x 12-12", 4 ply Super Turf.

23"x9.5-12", 4 ply Super Turf on LZE651GKA484A2

LZE732GKA524A2 and LZE730GKA524B2.

SEAT—Deluxe, bolstered suspension seat with Elastomeric Vibration Control material.

Two-tone bolstered seat with Elastomeric Vibration Control material on LZE740EKC60400.

Deluxe, two-tone, bolstered suspension seat with Elastomeric Vibration Control material. Seat Isolation System for reduced vibration, to enhance ride of standard seat on LZE730GKA524B2,

LZE742GKA604B1 and LZE801GKA604B1.

PARKING BRAKE—Lever-actuated disc brake.

SAFETY PACKAGE—Operator Presence Controls (OPC) and drive system interlock, with safety interlock system indicators.

ROPS—2-post foldable ROPS standard with seat belt and latch.

POWER COMPONENTS

DRIVE SYSTEM—Two Exmark exclusive Parker unitized pump and wheel motor systems with no hoses, integrated cooling fans, shock valve, 1.7-quart integrated reservoir, spin-on filter and heavy duty components. 12cc pumps and 14.5 cubic inch motors.

Two Exmark exclusive Parker unitized pump and wheel motor systems with no hoses, 1.7-quart integrated reservoir, spin-on filter and heavy duty components. 12cc pumps and 14.5 cubic inch motors on LZE651GKA484A2 and LZE732GKA524A2.

TRANSMISSION—Hydro-Drive.

SPEED—Up to 10.0 mph (16.0 kmph) forward, and up to 6.0 mph (9.7 kmph) reverse.

Up to 8.0 mph (12.9 kmph) forward, and up to 6.0 mph (9.7 kmph) reverse on LZE651GKA484A2 and LZE732GKA524A2.

PTO ENGAGEMENT—MagStop electromagnetic 200 ft-lb clutch with spot brake.

MagStop Electromagnetic 175 ft-lb clutch with spot brake on LZE651GKA484A2, LZE732GKA524A2 and LZE730GKA524B2.

FUEL CAPACITY—8-gallon (30.3-L) single fuel tank with single fill location.

ELECTRICAL SYSTEM—12-V battery with 15-amp alternator. 12-V battery with 20-amp alternator on LZE730GKA524B2, LZE730GKA604A3 and LZE740EKC60400.

ENGINE HOUR METER—Standard.

RIDING MOWER SPECIFICATIONS / DENOTES PROPANE MODEL

LAZER Z® S-SERIES								
Model	Engine	Blades	Cutting Width	Cutting Heights	Weight	Width	Length	Height
LZS651CKA484A2	Kawasaki® FX651V V-Twin (engine speed 3,750 rpm)	3 Blades at 16.25" (0.20"-thick (5.1 mm) alloy steel)	48" UltraCut™ Series 4 (121.9 cm)	1.0" (2.5 cm) to 5.5" (13.97 cm) in 0.25" (0.64 cm) increments.	1142 lbs.	59.6 in. (151.4 cm)	79.2 in. (201.2 cm)	70.0 in. (177.8 cm)
LZS740AKC524A2	Kohler® ECV740 Command™ EFI (engine speed 3,750 rpm)	3 Blades at 18.00" (0.20"-thick (5.1 mm) alloy steel)	52" UltraCut™ Series 4 (132.1 cm)	1.0" (2.5 cm) to 5.5" (13.97 cm) in 0.25" (0.64 cm) increments.	1165 lbs.	64.8 in. (164.6 cm)	79.2 in. (201.2 cm)	70.0 in. (177.8 cm)
LZS740PKC52400	Kohler® PCV740 Command™ EFI Propane (engine speed 3,750rpm)	3 Blades at 18.00" (0.20"-thick (5.1 mm) alloy steel)	52" UltraCut™ Series 4 (132.1 cm)	1.0" (2.5 cm) to 5.5" (13.97 cm) in 0.25" (0.64 cm) increments.	1307 lbs.	64.8 in. (164.6 cm)	79.2 in. (201.2 cm)	70.0 in. (177.8 cm)
LZS801GKA524A2	Kawasaki® FX801V V-Twin (engine speed 3,750 rpm)	3 Blades at 18.00" (0.20"-thick (5.1 mm) alloy steel)	52" UltraCut™ Series 4 (132.1 cm)	1.0" (2.5 cm) to 5.5" (13.97 cm) in 0.25" (0.64 cm) increments.	1134 lbs.	64.8 in. (164.6 cm)	79.2 in. (201.2 cm)	70.0 in. (177.8 cm)
LZS740PKC60400	Kohler® PCV740 Command™ EFI Propane (engine speed 3,750 rpm)	3 Blades at 20.50" (0.20"-thick (5.1 mm) alloy steel)	60" UltraCut™ Series 4 (152.4 cm)	1.0" (2.5 cm) to 5.5" (13.97 cm) in 0.25" (0.64 cm) increments.	1283 lbs.	72.8 in. (184.9 cm)	83.1 in. (211.1 cm)	70.0 in. (177.8 cm)
LZS749AKC604A1	Kohler® ECV740 Command™ EFI (engine speed 3,750 rpm)	3 Blades at 20.50" (0.20"-thick (5.1 mm) alloy steel)	60" UltraCut™ Series 4 (152.4 cm)	1.0" (2.5 cm) to 5.5" (13.97 cm) in 0.25" (0.64 cm) increments.	1249 lbs.	72.8 in. (184.9 cm)	83.1 in. (211.1 cm)	70.0 in. (177.8 cm)
LZS801GKA604A1	Kawasaki® FX801V V-Twin (engine speed 3,750 rpm)	3 Blades at 20.50" (0.20"-thick (5.1 mm) alloy steel)	60" UltraCut™ Series 4 (152.4 cm)	1.0" (2.5 cm) to 5.5" (13.97 cm) in 0.25" (0.64 cm) increments.	1197 lbs.	72.8 in. (184.9 cm)	83.1 in. (211.1 cm)	70.0 in. (177.8 cm)
LZS740PKC72400	Kohler® PCV740 Command™ EFI Propane (engine speed 3,750 rpm)	3 Blades at 24.50" (0.20"-thick (5.1 mm) alloy steel)	72" UltraCut™ Series 4 (182.9 cm)	1.0" (2.5 cm) to 5.5" (13.97 cm) in 0.25" (0.64 cm) increments.	1383 lbs.	84.9 in. (215.6 cm)	83.1 in. (211.1 cm)	70.0 in. (177.8 cm)
LZS749AKC72400	Kohler® ECV749 Command™ EFI (engine speed 3,750 rpm)	3 Blades at 24.50" (0.20"-thick (5.1 mm) alloy steel)	72" UltraCut™ Series 4 (182.9 cm)	1.0" (2.5 cm) to 5.5" (13.97 cm) in 0.25" (0.64 cm) increments.	1220 lbs.	84.9 in. (215.6 cm)	86.1 in. (211.1 cm)	70.0 in. (177.8 cm)
LZS749AKC724A1	Kohler® ECV749 Command™ EFI (engine speed 3,750 rpm)	3 Blades at 24.50" (0.20"-thick (5.1 mm) alloy steel)	72" UltraCut™ Series 4 (182.9 cm)	1.0" (2.5 cm) to 5.5" (13.97 cm) in 0.25" (0.64 cm) increments.	1305 lbs.	84.9 in. (215.6 cm)	86.1 in. (211.1 cm)	70.0 in. (177.8 cm)
LZS801GKA724A1	Kawasaki® FX801V V-Twin (engine speed 3,750 rpm)	3 Blades at 24.50" (0.20"-thick (5.1 mm) alloy steel)	72" UltraCut™ Series 4 (182.9 cm)	1.0" (2.5 cm) to 5.5" (13.97 cm) in 0.25" (0.64 cm) increments.	1263 lbs.	84.9 in. (215.6 cm)	86.1 in. (211.1 cm)	70.0 in. (177.8 cm)

DECK / FRAME / BLADE

DECK CONSTRUCTION—10-gauge top that is formed and continuously seam welded, 7-gauge side skirt and 7-gauge formed and welded spindle mounting locations for improved strength and reduced weight. 10-gauge top that is formed and continuously seam welded, 7-gauge side skirt and 7-gauge reinforced spindle mounting locations for improved strength and reduced weight on LZS740AKC524A2 and LZS801GKA524A2.

DECK STYLE—Full-floating, side-discharge standard, with molded discharge chute and option to bag or mulch.

DECK LIFT—Standard; foot-controlled deck lift changes cutting height and lifts the deck to maneuver around obstacles, or place in transport position.

TRACTOR FRAME—Unibody, welded, heavy duty 1.5"x3" tubular steel.

BLADE SPINDLES—No maintenance, sealed and non-greasable spindles; 7.75"-diameter cutter housing with 25 mm (0.98") diameter spindle shaft and splined blade driver.

No maintenance, sealed and non-greasable spindles; 7.75"-diameter cutter housing with 30 mm (1.18") diameter spindle shaft and splined blade driver on LZS740AKC524A2 and LZS749AKC604A1.

BLADE-TIP SPEED—Approximately 18,500 fpm.

EQUIPMENT

AIR FILTER—Heavy duty canister air filtration system.

STEERING & MOTION CONTROL—Hydraulically dampened twin levers, adjustable both fore and aft. Adjustable dampeners (3 positions) to customize drive responsiveness. Also adjustable to 2 height positions.

TURNING RADIUS—True zero-turn.

CASTERS—0.50"-thick caster yoke arm. 0.50"-thick double-yoke, smooth tread caster wheel assembly with pre-installed bearing cups on LZS902DKU605A1, LZS902DKU60R00, LZS902DKU725A1 and LZS902DKU72R00.

FRONT CASTER TIRES—13"x6.5-6", smooth-tread, semi-pneumatic. 13"x5.0-6", smooth-tread, semi-pneumatic on LZS651CKA484A2, LZS740AKC524A2, LZS740PKC52400 and LZS801GKA524A2.

DRIVE TIRES—24"x 12-12", 4-ply Turf Master. 24"x 12-12", Turf Master on LZS749AKC604A1 and LZS749AKC72400. 23"x9.5-12", 4-ply Turf Master on LZS651CKA484A2, LZS740AKC524A2, LZS740PKC52400 and LZS801GKA524A2.

SEAT—Deluxe, two-tone, bolstered suspension seat with Elastomeric Vibration Control material. Mounted on innovative Seat Isolation System that provides operator isolation in all three planes of motion as well as fore-aft slide and seat flip-up.

Deluxe, two-tone, bolstered seat with Elastomeric Vibration Control material. Mounted on innovative Seat Isolation System that provides operator isolation in all three planes of motion as well as fore-aft slide and seat flip-up on LZS740PKC52400, LZS740PKC60400, LZS740PKC72400 and LZS749AKC72400.

PARKING BRAKE—Lever-actuated disc brake.

SAFETY PACKAGE—Operator Presence Controls (OPC) and drive system interlock, with safety interlock system indicators.

ROPS—2-post foldable ROPS standard with seat belt and latch.

POWER COMPONENTS

DRIVE SYSTEM—Two Exmark exclusive Parker unitized pump and wheel motor systems with no hoses, integrated cooling fans, 1.7-quart integrated reservoir, spin-on filter and heavy duty components. 12cc pumps and 14.5 cubic inch motors on LZS651CKA484A2, LZS740AKC524A2, LZS740PKC52400, LZS801GKA524A2 and LZS749AKC604A1.

Two Exmark exclusive Parker unitized pump and wheel motor systems with no hoses, integrated cooling fans, shock valve, 1.7-quart integrated reservoir, spin-on filter and heavy duty components. 12cc pumps and 14.5 cubic inch motors on LZS740PKC60400, LZS801GKA604A1, LZS740PKC72400, LZS749AKC72400, LZS749AKC724A1 and LZS801GKA724A1.

TRANSMISSION—Hydro-Drive.

SPEED—Up to 10.0 mph (16 kmph) forward, and up to 6.0 mph (9.7 kmph) reverse.

PTO ENGAGEMENT—MagStop Electromagnetic 200 ft-lb clutch.

FUEL CAPACITY—12-gallon (45.4-L), single fuel tank with single fill location. 10.3-gallon propane tank on LZS740PKC52400, LZS740PKC60400 and LZS740PKC72400.

ELECTRICAL SYSTEM—12-V battery with 20-amp alternator. 12-V battery with 15-amp alternator on LZS651CKA484A2, LZS801GKA524A2, LZS801GKA604A1 and LZS801GKA724A1. 12-V battery with 60-amp alternator on LZS902DKU605A1, LZS902DKU60R00, LZS902DKU725A1 and LZS902DKU72R00.

ENGINE HOUR METER—Standard.

RIDING MOWER SPECIFICATIONS

LAZER Z® X-SERIES								
Model	Engine	Blades	Cutting Width	Cutting Heights	Weight	Width	Length	Height
LZX740EKC526T0	Kohler® ECV740 Command™ EFI (engine speed 3,650 rpm)	3 Blades at 18.00" (0.20"-thick (5.1 mm) alloy steel)	52" UltraCut™ Series 6 (121.9 cm)	1.0" (2.5 cm) to 5.5" (11.8 cm) in 0.25" (0.64 cm) increments.	1116 lbs.	64.8 in. (164.6 cm)	79.2 in. (201.2 cm)	70.0 in. (177.8 cm)
LZX801GKA60600	Kawasaki® FX801V V-Twin (engine speed 3,750 rpm)	3 Blades at 20.50" (0.20"-thick (5.1 mm) alloy steel)	60" UltraCut™ Series 6 (132.1 cm)	1.0" (2.5 cm) to 5.5" (11.8 cm) in 0.25" (0.64 cm) increments.	1215 lbs.	72.8 in. (184.9 cm)	83.1 in. (211.1 cm)	70.0 in. (177.8 cm)
LZX801GKA606B1	Kawasaki® FX801V V-Twin (engine speed 3,750 rpm)	3 Blades at 20.50" (0.20"-thick (5.1 mm) alloy steel)	60" UltraCut™ Series 6 (132.1 cm)	1.0" (2.5 cm) to 5.5" (11.8 cm) in 0.25" (0.64 cm) increments.	1215 lbs.	72.8 in. (184.9 cm)	83.1 in. (211.1 cm)	70.0 in. (177.8 cm)
LZX940EKC60600	Kohler® ECV940 Command™ EFI (engine speed 3,650 rpm)	3 Blades at 20.50" (0.20"-thick (5.1 mm) alloy steel)	60" UltraCut™ Series 6 (152.4 cm)	1.0" (2.5 cm) to 5.5" (11.8 cm) in 0.25" (0.64 cm) increments.	1264 lbs.	72.8 in. (184.9 cm)	83.1 in. (211.1 cm)	70.0 in. (177.8 cm)
LZX940EKC606T0	Kohler® ECV940 Command™ EFI (engine speed 3,650 rpm)	3 Blades at 20.50" (0.20"-thick (5.1 mm) alloy steel)	60" UltraCut™ Series 6 (152.4 cm)	1.0" (2.5 cm) to 5.5" (11.8 cm) in 0.25" (0.64 cm) increments.	1264 lbs.	72.8 in. (184.9 cm)	83.1 in. (211.1 cm)	70.0 in. (177.8 cm)
LZX940EKC60R0T0	Kohler® ECV940 Command™ EFI (engine speed 3,650 rpm)	3 Blades at 20.50" (0.20"-thick (5.1 mm) alloy steel)	60" UltraCut™ Rear Discharge (152.4 cm)	1.0" (2.5 cm) to 5.5" (11.8 cm) in 0.25" (0.64 cm) increments.	1247 lbs.	72.8 in. (184.9 cm)	87.2 in. (221.5 cm)	70.0 in. (177.8 cm)
LZX921GKA72600	Kawasaki® FX921V V-Twin (engine speed 3,750 rpm)	3 Blades at 24.50" (0.20"-thick (5.1 mm) alloy steel)	72" UltraCut™ Series 6 (152.4 cm)	1.0" (2.5 cm) to 5.5" (11.8 cm) in 0.25" (0.64 cm) increments.	1259 lbs.	84.9 in. (215.6 cm)	86.1 in. (218.7 cm)	70.0 in. (177.8 cm)
LZX921GKA726B1	Kawasaki® FX921V V-Twin (engine speed 3,750 rpm)	3 Blades at 24.50" (0.20"-thick (5.1 mm) alloy steel)	72" UltraCut™ Series 6 (152.4 cm)	1.0" (2.5 cm) to 5.5" (11.8 cm) in 0.25" (0.64 cm) increments.	1294 lbs.	84.9 in. (215.6 cm)	86.1 in. (218.7 cm)	70.0 in. (177.8 cm)
LZX940EKC72R0T0	Kohler® ECV940 Command™ EFI (engine speed 3,650 rpm)	3 Blades at 24.50" (0.20"-thick (5.1 mm) alloy steel)	72" UltraCut™ Rear Discharge (152.4 cm)	1.0" (2.5 cm) to 5.5" (11.8 cm) in 0.25" (0.64 cm) increments.	1259 lbs.	84.9 in. (215.6 cm)	87.2 in. (221.5 cm)	70.0 in. (177.8 cm)
LZX980EKC72600	Kohler® ECV980 Command™ EFI (engine speed 3,650 rpm)	3 Blades at 24.50" (0.20"-thick (5.1 mm) alloy steel)	72" UltraCut™ Series 6 (152.4 cm)	1.0" (2.5 cm) to 5.5" (11.8 cm) in 0.25" (0.64 cm) increments.	1276 lbs.	84.9 in. (215.6 cm)	86.1 in. (218.7 cm)	70.0 in. (177.8 cm)
LZX980EKC726T0	Kohler® ECV980 Command™ EFI (engine speed 3,650 rpm)	3 Blades at 24.50" (0.20"-thick (5.1 mm) alloy steel)	72" UltraCut™ Series 6 (182.9 cm)	1.0" (2.5 cm) to 5.5" (11.8 cm) in 0.25" (0.64 cm) increments.	1276 lbs.	84.9 in. (215.6 cm)	86.1 in. (218.7 cm)	70.0 in. (177.8 cm)

DECK / FRAME / BLADE

DECK CONSTRUCTION—10-gauge top that is formed and continuously seam welded, 7-gauge side skirt and 7-gauge formed and welded spindle mounting locations for improved strength and reduced weight. 10-gauge top that is formed and continuously seam welded, 7-gauge side skirt and 7-gauge reinforced spindle mounting locations for improved strength and reduced weight on LZX740EKC526T0. 7-gauge, high-strength alloy top that is formed and continuously seam welded, with 7-gauge high-strength alloy side skirt on LZX940EKC60R0T0 and LZX940EKC72R0T0.

DECK STYLE—Full-floating, with heavy duty spindle. Side-discharge standard with the option to bag or mulch.

Full-floating, rear-discharge deck with option to mulch on LZX940EKC60R0T0 and LZX940EKC72R0T0.

DECK LIFT—Standard; foot-controlled deck lift changes cutting height and lifts the deck to maneuver around obstacles, or place in transport position.

TRACTOR FRAME—Unibody, welded, heavy duty 1.5"x3" tubular steel.

BLADE SPINDLES—No maintenance, sealed and non-greasable spindles; 7.75"-diameter cutter housing with 30 mm (1.18") diameter spindle shaft and splined blade driver.

BLADE-TIP SPEED—Approximately 18,500 fpm.

EQUIPMENT

AIR FILTER—Heavy duty canister air filtration system.

STEERING & MOTION CONTROL—Hydraulically dampened twin levers, adjustable both fore and aft. Adjustable dampeners (3 positions) to customize drive responsiveness. Also adjustable to 2 height positions.

TURNING RADIUS—True zero-turn.

CASTERS—0.50"-thick caster yoke arm.

FRONT CASTER TIRES—13"x6.5-6", smooth-tread, pneumatic. 13"x5.0-6", smooth-tread, semi-pneumatic on LZX740EKC526T0.

DRIVE TIRES—24"x 12.0-12", 4-ply Turf Master. 23"x9.5-12", 4-ply Turf Master on LZX740EKC526T0.

SEAT—Deluxe, two-tone, bolstered suspension seat with Elastomeric Vibration Control material. Mounted on innovative Seat Isolation System that provides operator isolation in all three planes of motion as well as fore-aft slide and seat flip-up on LZX921GKA606B1 and LZX921GKA726B1.

Deluxe, two-tone, bolstered seat with Elastomeric Vibration Control material. Mounted on innovative Seat Isolation System that provides operator isolation in all three planes of motion as well as fore-aft slide and seat flip-up on LZX921GKA606B1 and LZX921GKA726B1.

PARKING BRAKE—Lever-actuated disc brake.

SAFETY PACKAGE—Operator Presence Controls (OPC) and drive system interlock, with safety interlock system indicators.

ROPS—2-post foldable ROPS standard with seat belt and latch.

POWER COMPONENTS

DRIVE SYSTEM—Two Exmark exclusive Parker unitized pump and wheel motor systems with no hoses, integrated cooling fans, shock valve, 1.7-quart integrated reservoir, spin-on filter and heavy duty components. 16cc pumps and 17.1 cubic inch motors.

Two Exmark exclusive Parker unitized pump and wheel motor systems with no hoses, integrated cooling fans, 1.7-quart integrated reservoir, spin-on filter and heavy duty components. 12cc pumps and 14. 5 cubic inch motors on LZX740EKC526T0.

TRANSMISSION—Hydro-Drive.

SPEED—Up to 10.0 mph (16 kmph) forward, and up to 6.0 mph (9.7 kmph) reverse on LZX740EKC526T0, LZX921GKA606B1, LZX940EKC60R0T0, LZX921GKA726B1 and LZX940EKC72R0T0. Up to 11.5 mph (18.5 kmph) forward, and up to 6.0 mph (9.7 kmph) reverse on LZX801GKA60600, LZX940EKC60600, LZX940EKC606T0, LZX980EKC72600 and LZX980EKC726T0.

PTO ENGAGEMENT—MagStop Electromagnetic 200 ft-lb clutch with spot brake on LZX740EKC526T0 and LZX801GKA60600. MagStop Electromagnetic 250 ft-lb clutch with spot brake.

FUEL CAPACITY—12-gallon (45.4-L), single fuel tank with single fill location.

ELECTRICAL SYSTEM—12-V battery with 25-amp alternator. 12-V battery with 15-amp alternator on LZX801GKA60600, LZX801GKA606B1, LZX921GKA72600, LZX921GKA606B1 and LZX921GKA726B1.

ENGINE HOUR METER—Standard.

LAZER Z® DS-SERIES								
Model	Engine	Blades	Cutting Width	Cutting Heights	Weight	Width	Length	Height
LZS902DKU605A1	Kubota® D902 Kubota Diesel (engine speed 3,850 rpm)	3 Blades at 20.75" (0.20"-thick (5.1 mm) alloy steel)	60" Series 5 (152.4 cm)	1.0" (2.5 cm) to 5.0" (12.7 cm) in 0.25" (0.64 cm) increments.	1602 lbs.	72.8 in. (184.9 cm)	84.5 in. (214.6 cm)	72.7 in. (184.7 cm)
LZS902DKU60R00	Kubota® D902 Kubota Diesel (engine speed 3,850 rpm)	3 Blades at 20.50" (0.20"-thick (5.1 mm) alloy steel)	60" UltraCut™ Rear Discharge (152.4 cm)	1.5" (3.8 cm) to 5.0" (11.8 cm) in 0.25" (0.64 cm) increments.	1552 lbs.	66.2 in. (168.1 cm)	85.6 in. (217.4 cm)	72.7 in. (184.7 cm)
LZS902DKU725A1	Kubota® D902 Kubota Diesel (engine speed 3,850 rpm)	3 Blades at 24.75" (0.20"-thick (5.1 mm) alloy steel)	72" Series 5 (182.9 cm)	1.0" (2.5 cm) to 5.0" (12.7 cm) in 0.25" (0.64 cm) increments.	1702 lbs.	85.8 in. (217.9 cm)	88.7 in. (225.3 cm)	72.7 in. (184.7 cm)
LZS902DKU72R00	Kubota® D902 Kubota Diesel (engine speed 3,850 rpm)	3 Blades at 24.50" (0.20"-thick (5.1 mm) alloy steel)	72" UltraCut™ Rear Discharge (182.9 cm)	1.5" (3.8 cm) to 5.0" (11.8 cm) in 0.25" (0.64 cm) increments.	1629 lbs.	78.2in. (198.6 cm)	89.8 in. (228.1 cm)	72.7 in. (184.7 cm)

DECK / FRAME / BLADE

DECK CONSTRUCTION—10-gauge top that is formed and continuously seam-welded, with 10-gauge top reinforcement plate, 7-gauge side skirt and 7-gauge reinforcement rings at spindle assembly on LZS902DKU605A1 and LZS902DKU725A1.

7-gauge, high-strength alloy top that is formed and continuously seam welded, with 7-gauge, high-strength alloy side skirt on LZS902DKU60R00 and LZS902DKU72R00.

DECK STYLE—Full-floating, rear-discharge deck with option to mulch on LZS902DKU60R00 and LZS902DKU72R00. Full-floating, high-capacity cutting platform, side-discharge standard with option to bag or mulch on LZS902DKU605A1 and LZS902DKU725A1.

DECK LIFT—Standard; foot or hand controlled deck lift changes cutting height and lifts the deck to maneuver around obstacles, or place in transport position.

TRACTOR FRAME—Welded, heavy duty tubular steel.

BLADE SPINDLES—No maintenance, sealed and non-greasable spindles; 7.75"-diameter cutter housing with 1.75" diameter splined blade driver and 1.18" diameter spindle shaft.

BLADE-TIP SPEED—Approximately 18,500 fpm.

EQUIPMENT

AIR FILTER—Heavy duty canister air filtration system.

STEERING & MOTION CONTROL—Hydraulically dampened twin levers, adjustable both fore and aft. Adjustable dampeners (3 positions) to customize drive responsiveness. Also adjustable to 2 height positions.

TURNING RADIUS—True zero-turn.

CASTERS—0.50"-thick double-yoke, smooth tread caster wheel assembly with pre-installed bearing cups.

FRONT CASTER TIRES—13"x6.5-6", smooth-tread, semi-pneumatic on LZS902DKU605A1 and LZS902DKU725A1. 15"x6.0-6, smooth-tread, semi-pneumatic on LZS902DKU60R00 and LZS902DKU72R00.

DRIVE TIRES—26"x 12-12, 4-ply Multi-Trac.

SEAT—Deluxe, two tone, bolstered, full-suspension seat with Elastomeric Vibration Control material. Adjusts to individual operator weight and features padded, height-adjustable armrests. Hinged mounting.

PARKING BRAKE—Lever-actuated drum and band integrated with transmission-neutral interlock.

SAFETY PACKAGE—Operator Presence Controls (OPC) and drive system interlock.

ROPS—2-post foldable ROPS standard with seat belt and latch.

POWER COMPONENTS

<

RIDING MOWER SPECIFICATIONS

NAVIGATOR®								
Model	Engine	Blades	Cutting Width	Cutting Heights	Weight	Width	Length	Height
NVS640CKC42000	Kohler® CH640 Command™ (engine speed 3,600 rpm)	2 Blades at 22.0" (0.20"-thick (5.1 mm) alloy steel)	42" Center Discharge Deck (106.7cm)	1.0" (2.5 cm) to 4.0" (10.2 cm) in 0.25" (.64 cm) increments.	1140 lbs.	45.6 in. (115.8 cm)	91.8 in. (233.2 cm)	51.2 in. (130.8 cm)
NVS640CKC48000	Kohler® CH640 Command™ (engine speed 3,600 rpm)	2 Blades at 25.0" (0.20"-thick (5.1 mm) alloy steel)	48" Center Discharge Deck (121.9 cm)	1.0" (2.5 cm) to 4.0" (10.2 cm) in 0.25" (.64 cm) increments.	1170 lbs.	54.1 in (137.4 cm)	94.5 in. (240.0 cm)	51.2 in. (130.8 cm)
NVS730AKC48000	Kohler® ECH730 Command™ EFI (engine speed 3,600 rpm)	2 Blades at 25.0" (0.20"-thick (5.1 mm) alloy steel)	48" Center Discharge Deck (121.9 cm)	1.0" (2.5 cm) to 4.0" (10.2 cm) in 0.25" (.64 cm) increments.	1170 lbs.	61.7 in. (156.7 cm)	94.5 in. (240.0 cm)	51.2 in. (130.8 cm)
NVS740AKC48000	Kohler® ECH740 Command™ EFI (engine speed 3,600 rpm)	2 Blades at 25.0" (0.20"-thick (5.1 mm) alloy steel)	48" Center Discharge Deck (121.9 cm)	1.0" (2.5 cm) to 4.0" (10.2 cm) in 0.25" (.64 cm) increments.	1170 lbs.	61.7 in. (156.7 cm)	94.5 in. (240.0 cm)	51.2 in. (130.8 cm)

DECK / FRAME / BLADE

DECK CONSTRUCTION–7-gauge sides joined by a continuous bead weld to a 10-gauge top, 3/16" wear guard is welded to the entire base of the deck, 7-gauge deck spindle supports, 0.25"-thick strap steel deck supports.

DECK STYLE–Full-Floating, rear-discharge cutting deck with heavy duty gear driven spindle assembly. Patented fill reduction baffles standard.

DECK LIFT–Standard; lever lift. Foot-assist lifts the deck to maneuver around obstacles.

TRACTOR FRAME–Channeled and fully welded 1.5"x1.5"x0.187" wall tubing with a ground clearance of 4.0", str.

BLADE SPINDLES–Heavy duty cast iron right-angle gearboxes.

BLADE-TIP SPEED–Approximately 18,500 fpm.

EQUIPMENT

AIR FILTER–Heavy duty canister air filtration.

BAG CAPACITY–9.5 bushel (76 gallons).

STEERING & MOTION CONTROL–FeatherTouch hand-control drive levers, low-force constant speed lever.

TURNING RADIUS–True zero-turn.

CASTERS–0.50"-thick rear caster fork.

FRONT CASTER TIRES–8"x3.0-4" semi-pneumatic.

DRIVE TIRES–18"x10.5-10" Multi-Trac.

SEAT–High-back, Elastomeric Vibration Control seat, which has no springs to break.

PARKING BRAKE–Wet disc, internal in wheel motor.

SAFETY PACKAGE–Operator Presence Controls (OPC) and drive system interlock.

ROPS–Optional 2-post foldable ROPS with seat belt and latch.

POWER COMPONENTS

DRIVE SYSTEM–New dual Hydro-Gear 12cc variable displacement pumps power Hydro-Gear H Series motors.

TRANSMISSION–Hydro-Drive.

SPEED–Up to 7.0 mph (11.3 kmph) forward, and up to 4.5 mph (7.2 kmph) reverse.

PTO ENGAGEMENT–Lever-actuated clutching belt with 6" brake band.

FUEL CAPACITY–7.5-gallon (28.4-L), pivoting tank for easier engine service.

ELECTRICAL SYSTEM–12-V battery, 15-amp alternator. 12-V battery with 20-amp alternator on NVS730AKC48000 and NVS740AKC48000.

UTILITY VEHICLE SPECIFICATIONS

EXMARK UTV										
Model	Engine	Displacement	Drive System	Alternator Capacity	Cooling System	Box Capacity	Weight	Overall Width	Overall Length	Overall Height
UTS500AAC00000	SOHC 36 hp, 4-stroke, 4-valve w/EFI	443cc	2/4 WD	28 amps	Liquid with Fan	600 lbs	1307 lbs	60" (152.4 cm)	129" (327.7 cm)	79" (200.7 cm)
UTS700AAC00000	SOHC 46 hp, 4-stroke, 4-valve w/EFI	695cc	2/4 WD + Electric Front Differential Lock	28 amps	Liquid with Fan	1000 lbs	1363 lbs	60" (152.4 cm)	129" (327.7 cm)	79" (200.7 cm)
UTS700AAC000EP	SOHC 46 hp, 4-stroke, 4-valve w/EFI	695cc	2/4 WD + Electric Front Differential Lock	28 amps	Liquid with Fan	1000 lbs	1363 lbs	60" (152.4 cm)	129" (327.7 cm)	79" (200.7 cm)

FRONT TIRES–26x9R14

FRONT BRAKES–Hydraulic Disc

FRONT SUSPENSION–Double A-Arm

FRONT TRAVEL–10"

REAR TIRES–26x11R14

REAR BRAKES–Hydraulic Disc

REAR SUSPENSION–Double A-Arm

REAR TRAVEL–10"

TRANSMISSION–Automatic CVT with EBS, Hi/Lo Range, Reverse & Park

WHEEL BASE–85"

GROUND CLEARANCE–10"

STEERING–Manual, power steering on UTS700AAC000EP

TOW CAPACITY–1500 lbs

SPEED–Up to 44 mph (72.4 kmph) on UTS500AAC00000.

Up to 55 mph (88.5 kmph) on UTS700AAC00000 and UTS700AAC000EP

FUEL CAPACITY–8.2 gallons (31.0-L)

TURF MANAGEMENT EQUIPMENT SPECIFICATIONS

SPREADER-SPRAYER								
Model	Engine	Hopper Capacity	Tank Capacity	Spray Width	Spread Width	Overall Width	Overall Length	Overall Height
SSS270CSB00000	Subaru® EX270	175 lbs. + 50 lbs. on spray tank; 12 VDC, 2 hp motor	20 gallons (75.7-L)	Wide spray up to 11 ft wide Narrow spray up to 5 ft wide	Adjustable from 4 ft up to 22 ft	35.5" (90.2 cm)	67.5" (171.5 cm)	51.5" (130.8 cm)

FRONT TIRES–18"x7.5-8"

REAR TIRES–13"x6.5-6"

FRAME–Stainless Steel

DRIVE–Tuff Torq

TRANSMISSION–Hydrostatic

PUMP–Remco

SPEED–Up to 5.5 mph (8.9 kmph) forward,

and up to 4.0 mph (6.4 kmph) reverse.

FUEL CAPACITY–1.59 gallons (6.0-L)

SPRAY RATE–

Wide–0.69 gpm at 30 psi,0.80 gpm at 40 psi;

Narrow–0.35 gpm at 30 psi, 0.40 gpm at 40 psi

SLICER SEEDER

Model	Engine	Working Width	Cutting Depth	Weight	Overall Width	Overall Length	Overall Height	Hopper Size
SDS270CSB20000	Subaru® EX270	20" (50.8 cm)	Adjustable up to 1" deep	270 lbs.	30" (72 cm)	52" (132.1 cm)	45" (114.3 cm)	40 lbs.

TIRES–11"x4–4"

FUEL CAPACITY–1.6 gallons

21" WALK-BEHIND AERATOR

Model	Engine	Number of Tines	Working Width	Core Depth	Weight	Overall Width	Overall Length	Overall Height
ARS180CKA21000	Kawasaki® FJ180	36 Coring Tines	21" (53.3 cm)	2" (5.1 cm)-3" (7.6 cm) [4.6 plugs per square foot]	270 lbs.	31" (78.7 cm)	61" (154.9 cm)	52" (132.1 cm)

FRONT TIRES–11"x4.0-4" Turf TL

REAR TIRES–10"x2.75-5.5" Solid

DRIVE–#40 chain

TRANSMISSION–Hydro Gear T2

SPEED–4.0 mph (5.9 kmph)

IGNITION–Recoil start

FUEL CAPACITY–1 gallon (3.8-L)

30" STAND-ON AERATOR

Model	Engine	Number of Tines	Working Width	Core Depth	Weight	Overall Width	Overall Length	Overall Height
ARK481CKA30000	Kawasaki® FS481V V-Twin	48 Coring Tines	30" (76.2 cm)	2" (5.1 cm)-5" (12.7 cm) [4.6 plugs per square foot]	1015 lbs.	47.75" (121.3 cm)	69.8" (177.3 cm)	52" (132.1 cm)

FRONT TIRES–13"x5-6", smooth semi-pneumatic

REAR TIRES–16"x6.5-8" Super Turf

DRIVE–#50 chain

TRANSMISSION–Hydro-Gear ZT3100

SPEED–7.0 mph (10.3 kmph)

IGNITION–Electric start

FUEL CAPACITY–5 gallons (18.9-L)

ROTARY BROOM

Model	Engine	Broom Speed	Broom Diameter	Broom Angle	Steering	Weight	Overall Width	Overall Length	Overall Height
BRS270CKC36000	Kohler® CH270 Command Pro™	200 rpm	25" (63.5 cm)	40° total, 20° left & 20° right	Power steering with clutch left and right hand.	323 lbs	46.5" (118.1 cm)	73" (185.4 cm)	41.5" (105.4 cm)

TIRES–15"x5.0-6" X-Trac

BROOM DRIVE–Direct

TRANSMISSION–Friction disc

SPEED–6 Forward, 2 Reverse

IGNITION–Recoil start

FUEL CAPACITY–4.3 quarts (4.0L)

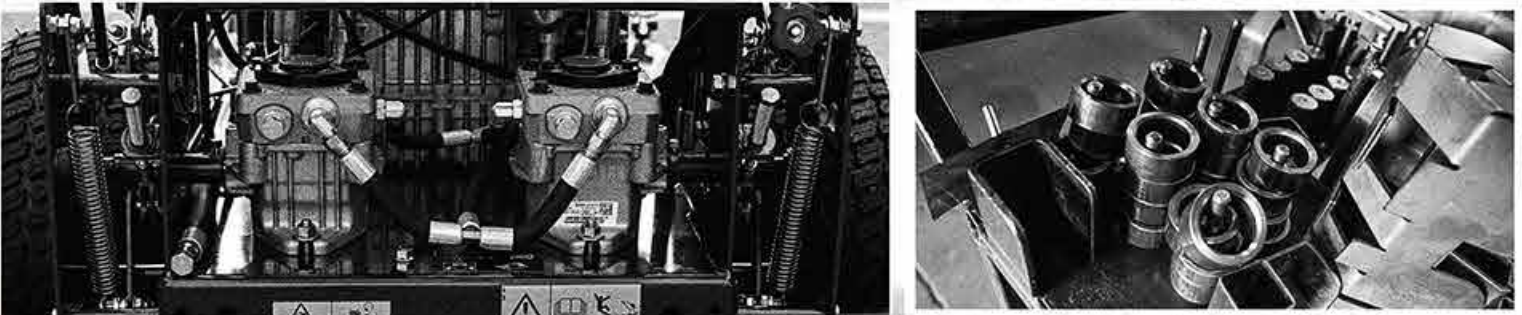
NOTES

INDUSTRY-LEADING WARRANTY

When you buy an Exmark® zero-turn or walk-behind mowing system, you can purchase with confidence, knowing it's fully backed by Exmark's best-in-class warranty.

UNIT TYPE	COMMERCIAL WARRANTY	CONSUMER WARRANTY
COMMERCIAL RIDERS & FRONT-MOUNT DECKS		
Lazer Z® DS-Series & Navigator®	2 Years, Limited	2 Years, Limited
WARRANTY EXCEPTIONS Battery Engine*	1 Year 2 Years	1 Year 2 Years
Lazer Z® X-Series, Lazer Z® S-Series & Vantage®	3 Years, Limited	5 Years or 750 Hours, Limited
WARRANTY EXCEPTIONS Battery Engine*	1 Year 3 Years–Kawasaki® 3 Years–Kohler®	1 Year 3 Years–Kawasaki® 3 Years–Kohler®
Lazer Z® E-Series	2 Years, Limited	4 Years or 500 Hours, Limited
WARRANTY EXCEPTIONS Battery Engine*	1 Year 3 Years–Kawasaki® 3 Years–Kohler®	1 Year 3 Years–Kawasaki® 3 Years–Kohler®
Pioneer S-Series	2 Years, Limited	4 Years or 500 Hours, Limited
WARRANTY EXCEPTIONS Battery Engine*	1 Year 3 Years–Kawasaki® 3 Years–Kohler®	1 Year 3 Years 3 Years
Pioneer E-Series	1 Year, Limited	4 Years or 500 Hours, Limited
WARRANTY EXCEPTIONS Battery Engine*	1 Year 3 Years–Kawasaki®	1 Year 2 Years
Quest™ E-Series & Quest™ S-Series	30 Days, Limited	3 Years, Limited
WARRANTY EXCEPTIONS Battery Engine*	1 Year 90 Days	1 Year 3 Years–Kawasaki®
WALK-BEHINDS		
Commercial Walk-Behinds (excludes 21" & 30")	2 Years	2 Years
21" & 30" Mowers	1 Year	1 Year
TURF MANAGEMENT		
	1 Year, Limited	1 Year, Limited
ACCESSORIES		
Attachments and Accessories (except as noted below)	1 Year, Limited	1 Year, Limited
Striping Roller & Operator-Controlled Discharge	90 Days	90 Days
Quest Attachments and Accessories	30 Days, Limited	1 Year Limited
UTVS		
500S and 700S	1 Year or 1000 Hours	1 Year or 1000 Hours
MISCELLANEOUS		
Engine*	Warranty is covered by engine manufacturer	Warranty is covered by engine manufacturer
Peerless 5-Speed Transmission	2 Years (extended 21 months beyond manufacturer's warranty of 90 days)	2 Years (extended 21 months beyond manufacturer's warranty of 90 days)
Battery	1 Year, \$45.00 Fee	1 Year, \$45.00 Fee

See your local Exmark dealer for complete warranty details.
* Please refer to the engine manufacturer's warranty statement. We are not authorized to handle warranty adjustments on engines. This warranty only includes the cost of parts and labor.



EXMARK MFG. CO., INC


2101 Ashland Avenue

P.O. Box 808

Beatrice, NE 68310-0808

Call 402.223.6300

Fax 402.223.6384

www.exmark.com   

Products depicted in this literature are for demonstration purposes only. Actual products offered for sale may vary in use, design, required attachments and safety features. We reserve the right to improve our products and make changes in specifications, designs and standard equipment without notice and without incurring obligation. See your dealer for details on all of our warranties.

Exmark®, Turf Tracer®, Lazer Z®, Metro®, Pioneer®, Vantage®, Phazer®, Exmark Parts Plus® and Navigator® are registered trademarks, and Quest™, Viking™, UltraCut™, Micro-Mulch™, CustomRide™ and UltraVac™ are trademarks of Exmark Mfg. Co., Inc.

Kohler® is a registered trademark and Kohler® Command™ is a trademark of Kohler Co. Kawasaki® is a registered trademark of Kawasaki Motors Corp. Turf Mate®, Turf Master®, Turf Saver® and Multi-Trac® are registered trademarks of Carlisle Tire & Rubber Co.

Kubota® is a registered trademark of Kubota Engine America Corp. Honda® is a registered trademark of American Honda Motor Co., Inc. Hydro-Gear® is a registered trademark of Hydro-Gear. Subaru® is a registered trademark of Subaru of America, Inc.

For additional product information including operation manuals and safety materials please visit www.exmark.com.

© 2015 Exmark Manufacturing Company, Inc. All rights reserved.

Printed in the U.S.A. 2015 Form No. 126-7614

